

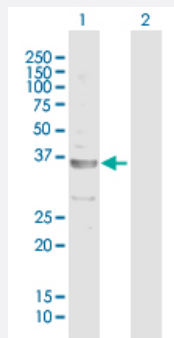
MaxPab®

## CECR1 purified MaxPab mouse polyclonal antibody (B01P)

Catalog # H00051816-B01P

Size 50 ug

### Applications



#### Western Blot (Transfected lysate)

Western Blot analysis of CECR1 expression in transfected 293T cell line ([H00051816-T01](#)) by CECR1 MaxPab polyclonal antibody.

Lane 1: CECR1 transfected lysate(29.7 KDa).

Lane 2: Non-transfected lysate.

### Specification

Product Description	Mouse polyclonal antibody raised against a full-length human CECR1 protein.
Immunogen	CECR1 (NP_803124.1, 1 a.a. ~ 270 a.a) full-length human protein.
Sequence	MDSLEWNWALVYELSGEHHDEEWSVKTYQEVAQKFVETHPEFIGIKIYSDHRSKDVAVIAESIRM AMGLRIKFPTVVAGFDLVGHEDTGHSLHDYKEALMIPAKDGVKLPYFFHAGETDWQGTSIDRNILD ALMLNTTRIGHGFALSKHPAVRTYSWKKDIPIEVCPISNQVLKLVSDLRNHPVATLMATGHPMVISS DDPAMFGAKGLSYDFYEVFMGIGGMKADLRTLKQLAMNSIKYSTLLESEKNTFMIEWKKRWDFI ADVATK
Host	Mouse
Reactivity	Human
Quality Control Testing	Antibody reactive against mammalian transfected lysate.
Storage Buffer	In 1x PBS, pH 7.4
Storage Instruction	Store at -20°C or lower. Aliquot to avoid repeated freezing and thawing.

## Applications

- Western Blot (Transfected lysate)

Western Blot analysis of CECR1 expression in transfected 293T cell line ([H00051816-T01](#)) by CECR1 MaxPab polyclonal antibody.

Lane 1: CECR1 transfected lysate(29.7 KDa).

Lane 2: Non-transfected lysate.

[Protocol Download](#)

## Gene Info — CECR1

Entrez GeneID	<a href="#">51816</a>
---------------	-----------------------

GeneBank Accession#	<a href="#">NM_177405.1</a>
---------------------	-----------------------------

Protein Accession#	<a href="#">NP_803124.1</a>
--------------------	-----------------------------

Gene Name	CECR1
-----------	-------

Gene Alias	ADGF, IDGFL
------------	-------------

Gene Description	cat eye syndrome chromosome region, candidate 1
------------------	---

Omim ID	<a href="#">607575</a>
---------	------------------------

Gene Ontology	<a href="#">Hyperlink</a>
---------------	---------------------------

Gene Summary	This gene encodes a member of a subfamily of the adenosine deaminase protein family. The encoded protein may act as a growth factor and have adenosine deaminase activity. It may be responsible for some of the phenotypic features associated with cat eye syndrome. Two transcript variants encoding distinct isoforms have been identified for this gene. [provided by RefSeq]
--------------	--

Other Designations	OTTHUMP00000028854 OTTHUMP00000196142 cat eye syndrome critical region protein 1
--------------------	--

## Disease

- [Tobacco Use Disorder](#)