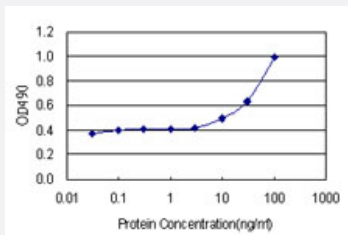


# ACP6 (Human) Matched Antibody Pair

Catalog # H00051205-AP21      Size 1 Set

## Applications



Sandwich ELISA detection sensitivity ranging from 3 ng/ml to 100 ng/ml.

## Specification

<b>Product Description</b>	This antibody pair set comes with a matched antibody pair to detect and quantify the protein level of human ACP6.
<b>Reactivity</b>	Human
<b>Interspecies Antigen Sequence</b>	Mouse (77); Rat (76)
<b>Quality Control Testing</b>	Standard curve using recombinant protein ( H00051205-P01 ) as an analyte. Sandwich ELISA detection sensitivity ranging from 3 ng/ml to 100 ng/ml.
<b>Supplied Product</b>	Antibody pair set content: 1. Capture antibody: rabbit MaxPab® affinity purified polyclonal anti-ACP6 (100 ug) 2. Detection antibody: mouse purified polyclonal anti-ACP6 (20 ug) *Reagents are sufficient for at least 1-2 x 96 well plates using recommended protocols.
<b>Storage Instruction</b>	Store reagents of the antibody pair set at -20°C or lower. Please aliquot to avoid repeated freeze thaw cycle. Reagents should be returned to -20°C storage immediately after use.

## Applications

- ELISA Pair (Recombinant protein)

[Protocol Download](#)

## Gene Info — ACP6

**Entrez GeneID** [51205](#)

**Gene Name** ACP6

**Gene Alias** ACPL1, LPAP, PACPL1

**Gene Description** acid phosphatase 6, lysophosphatidic

**Omim ID** [611471](#)

**Gene Ontology** [Hyperlink](#)

**Gene Summary** O

**Other Designations** OTTHUMP00000015904|acid phosphatase like 1|lysophosphatidic acid phosphatase

## Pathway

- [gamma-Hexachlorocyclohexane degradation](#)
- [Riboflavin metabolism](#)