

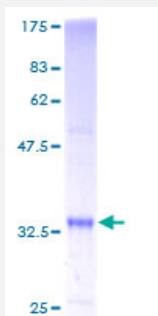
Full-Length

## SS18L2 (Human) Recombinant Protein (P01)

Catalog # H00051188-P01

Size 25 ug, 10 ug

### Applications



### Specification

Product Description	Human SS18L2 full-length ORF ( AAH17804, 1 a.a. - 77 a.a.) recombinant protein with GST-tag at N-terminal.
Sequence	MSVAFVPDWLRGKAEVNQETIQRLLLEENDQLIRCIVEYLNKGRGNECVQYQHVLHRNLIYLATIADA SPTSTSKAME
Host	Wheat Germ (in vitro)
Theoretical MW (kDa)	34.21
Interspecies Antigen Sequence	Mouse (85); Rat (85)
Preparation Method	<a href="#">in vitro wheat germ expression system</a>
Purification	Glutathione Sepharose 4 Fast Flow
Quality Control Testing	12.5% SDS-PAGE Stained with Coomassie Blue.
Storage Buffer	50 mM Tris-HCl, 10 mM reduced Glutathione, pH=8.0 in the elution buffer.
Storage Instruction	Store at -80°C. Aliquot to avoid repeated freezing and thawing.
Note	Best use within three months from the date of receipt of this protein.

## Applications

- Enzyme-linked Immunoabsorbent Assay
- Western Blot (Recombinant protein)
- Antibody Production
- Protein Array

## Gene Info — SS18L2

Entrez GeneID	<a href="#">51188</a>
GeneBank Accession#	<a href="#">BC017804</a>
Protein Accession#	<a href="#">AAH17804</a>
Gene Name	SS18L2
Gene Alias	KIAA-iso
Gene Description	synovial sarcoma translocation gene on chromosome 18-like 2
Omim ID	<a href="#">606473</a>
Gene Ontology	<a href="#">Hyperlink</a>
Gene Summary	Synovial sarcomas occur most frequently in the extremities around large joints. More than 90% of cases have a recurrent and specific chromosomal translocation, t(X;18)(p11.2;q11.2), in which the 5-prime end of the SS18 gene (MIM 600192) is fused in-frame to the 3-prime end of the SSX1 (MIM 312820), SSX2 (MIM 300192), or SSX4 (MIM 300326) gene. The SS18L2 gene is homologous to SS18.[supplied by OMIM]
Other Designations	SYT homolog 2