

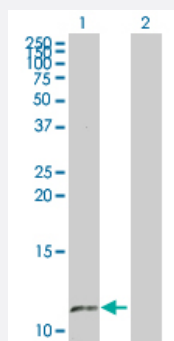
MaxPab®

## SS18L2 MaxPab mouse polyclonal antibody (B03P)

Catalog # H00051188-B03P

Size 50 ug

### Applications



#### Western Blot (Transfected lysate)

Western Blot analysis of SS18L2 expression in transfected 293T cell line ([H00051188-T03](#)) by SS18L2 MaxPab polyclonal antibody.

Lane 1: SS18L2 transfected lysate(8.58 KDa).

Lane 2: Non-transfected lysate.

### Specification

Product Description	Mouse polyclonal antibody raised against a full-length human SS18L2 protein.
Immunogen	SS18L2 (AAH17804.1, 1 a.a. ~ 77 a.a) full-length human protein.
Sequence	MSVAFVPDWLRGKAEVNQETIQRLLLEENDQLIRCIVEYLNKGRGNECVQYQHVLHRNLIYLATIADA SPTSTSKAME
Host	Mouse
Reactivity	Human
Interspecies Antigen Sequence	Mouse (85); Rat (85)
Quality Control Testing	Antibody reactive against mammalian transfected lysate.
Storage Buffer	In 1x PBS, pH 7.4
Storage Instruction	Store at -20°C or lower. Aliquot to avoid repeated freezing and thawing.

## Applications

- Western Blot (Transfected lysate)

Western Blot analysis of SS18L2 expression in transfected 293T cell line ([H00051188-T03](#)) by SS18L2 MaxPab polyclonal antibody.

Lane 1: SS18L2 transfected lysate(8.58 KDa).

Lane 2: Non-transfected lysate.

[Protocol Download](#)

## Gene Info — SS18L2

Entrez GeneID [51188](#)

GeneBank Accession# [BC017804.1](#)

Protein Accession# [AAH17804.1](#)

Gene Name SS18L2

Gene Alias KIAA-iso

Gene Description synovial sarcoma translocation gene on chromosome 18-like 2

Omim ID [606473](#)

Gene Ontology [Hyperlink](#)

**Gene Summary** Synovial sarcomas occur most frequently in the extremities around large joints. More than 90% of cases have a recurrent and specific chromosomal translocation, t(X;18)(p11.2;q11.2), in which the 5-prime end of the SS18 gene (MIM 600192) is fused in-frame to the 3-prime end of the SSX1 (MIM 312820), SSX2 (MIM 300192), or SSX4 (MIM 300326) gene. The SS18L2 gene is homologous to SS18.[supplied by OMIM]

**Other Designations** SYT homolog 2