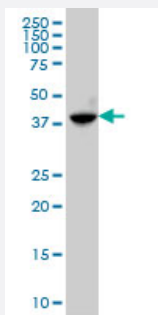


ABHD5 monoclonal antibody (M02), clone 4B12

Catalog # H00051099-M02

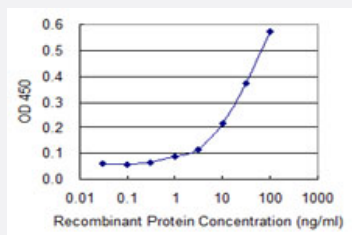
Size 100 ug

Applications



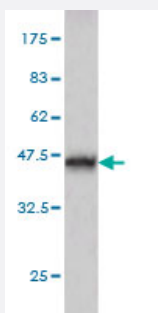
Western Blot (Cell lysate)

ABHD5 monoclonal antibody (M02), clone 4B12 Western Blot analysis of ABHD5 expression in A-431 (Cat # L015V1).



Sandwich ELISA (Recombinant protein)

Detection limit for recombinant GST tagged ABHD5 is 0.3 ng/ml as a capture antibody.



Western Blot detection against Immunogen (37.07 KDa) .

Specification

Product Description

Mouse monoclonal antibody raised against a partial recombinant ABHD5.

Immunogen	ABHD5 (NP_057090, 240 a.a. ~ 342 a.a) partial recombinant protein with GST tag. MW of the GST tag alone is 26 KDa.
Sequence	FEDDTVTEYYHCNVQTPSGETAFAKNMTIPYGWAKRPMLQRIGKMHPDIPVSVIFGARSCIDGNSGT SIQSLRPHSYVKTAILGAGHYVYADQPEEFNQKVK
Host	Mouse
Reactivity	Human
Interspecies Antigen Sequence	Mouse (94); Rat (94)
Isotype	IgG1 Kappa
Quality Control Testing	Antibody Reactive Against Recombinant Protein. Western Blot detection against Immunogen (37.07 KDa) .
Storage Buffer	In 1x PBS, pH 7.4
Storage Instruction	Store at -20°C or lower. Aliquot to avoid repeated freezing and thawing.

Applications

- Western Blot (Cell lysate)

ABHD5 monoclonal antibody (M02), clone 4B12 Western Blot analysis of ABHD5 expression in A-431 (Cat # L015V1).

[Protocol Download](#)

- Western Blot (Recombinant protein)

[Protocol Download](#)

- Sandwich ELISA (Recombinant protein)

Detection limit for recombinant GST tagged ABHD5 is 0.3 ng/ml as a capture antibody.

[Protocol Download](#)

- ELISA

Gene Info — ABHD5

Entrez GeneID [51099](#)

GeneBank Accession#	NM_016006
Protein Accession#	NP_057090
Gene Name	ABHD5
Gene Alias	CDS, CGI58, IECN2, MGC8731, NCIE2
Gene Description	abhydrolase domain containing 5
Omim ID	275630 604780
Gene Ontology	Hyperlink
Gene Summary	The protein encoded by this gene belongs to a large family of proteins defined by an alpha/beta hydrolase fold, and contains three sequence motifs that correspond to a catalytic triad found in the esterase/lipase/thioesterase subfamily. It differs from other members of this subfamily in that its putative catalytic triad contains an asparagine instead of the serine residue. Mutations in this gene have been associated with Chanarin-Dorfman syndrome, a triglyceride storage disease with impaired long-chain fatty acid oxidation. [provided by RefSeq]
Other Designations	-

Publication Reference

- [The Cannabinoid Receptor Agonist THC Attenuates Weight Loss in a Rodent Model of Activity-Based Anorexia.](#)

Verty AN, Evetts MJ, Crouch GJ, McGregor IS, Stefanidis A, Oldfield BJ.
Neuropsychopharmacology 2011 Mar; 36:1349.

Application: WB-Ti, Rat, Brown, White adipose tissue
- [Adipose triacylglycerol lipase deletion alters whole body energy metabolism and impairs exercise performance in mice.](#)

Huijsman E, van de Par C, Economou C, van der Poel C, Lynch GS, Schoiswohl G, Haemmerle G, Zechner R, Watt MJ.
American Journal of Physiology. Endocrinology and Metabolism 2009 Aug; 297(2):E505.

Application: WB, Mouse, Muscle, adipose
- [Adipose Triglyceride Lipase Regulation of Skeletal Muscle Lipid Metabolism and Insulin Responsiveness.](#)

Watt MJ, van Denderen BJ, Castelli LA, Bruce CR, Hoy AJ, Kraegen EW, Macaulay L, Kemp BE.
Molecular Endocrinology (Baltimore, Md.) 2008 Jan; 22(5):1200.

Application: WB-Ti, WB-Tr, Mouse, Mouse muscle, C2C12 cells