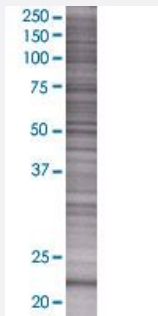


# EXOSC1 293T Cell Transient Overexpression Lysate(Denatured)

Catalog # H00051013-T02

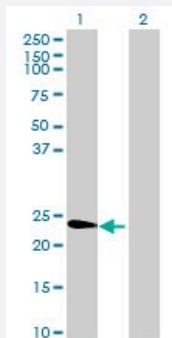
Size 100 uL

## Applications



### SDS-PAGE Gel

EXOSC1 transfected lysate.



### Western Blot

Lane 1: EXOSC1 transfected lysate ( 21.5 KDa)

Lane 2: Non-transfected lysate.

## Specification

Transfected Cell Line	293T
Plasmid	pCMV-EXOSC1 full-length
Host	Human
Theoretical MW (kDa)	21.5
Interspecies Antigen Sequence	Mouse (95); Rat (95)

**Quality Control Testing**

Transient overexpression cell lysate was tested with Anti-EXOSC1 antibody ([H00051013-B02](#)) by Western Blots.  
SDS-PAGE Gel  
EXOSC1 transfected lysate.  
Western Blot  
Lane 1: EXOSC1 transfected lysate ( 21.5 KDa)  
Lane 2: Non-transfected lysate.

**Storage Buffer**

1X Sample Buffer (50 mM Tris-HCl, 2% SDS, 10% glycerol, 300 mM 2-mercaptoethanol, 0.01% Bromophenol blue)

**Storage Instruction**

Store at -80°C. Aliquot to avoid repeated freezing and thawing.

## Applications

- Western Blot

## Gene Info — EXOSC1

**Entrez GeneID**[51013](#)**GeneBank Accession#**[NM\\_016046](#)**Protein Accession#**[NP\\_057130](#)**Gene Name**

EXOSC1

**Gene Alias**

CGI-108, CSL4, Csl4p, SKI4, Ski4p, hCsl4p, p13

**Gene Description**

exosome component 1

**Omim ID**[606493](#)**Gene Ontology**[Hyperlink](#)**Gene Summary**

This gene encodes a core component of the exosome. The mammalian exosome is required for rapid degradation of AU rich element-containing RNAs but not for poly(A) shortening. The association of this protein with the exosome is mediated by protein-protein interactions with ribosomal RNA-processing protein 42 and ribosomal RNA-processing protein 46. [provided by RefSeq]

**Other Designations**

3'-5' exoribonuclease CSL4 homolog|CSL4 exosomal core protein homolog|OTTHUMP00000020203|exosomal core protein CSL4|homolog of yeast exosomal core protein CSL4

## Pathway

- [RNA degradation](#)