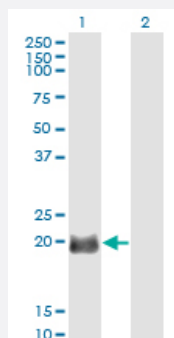


EXOSC1 monoclonal antibody (M01), clone 2E9

Catalog # H00051013-M01

Size 100 ug

Applications

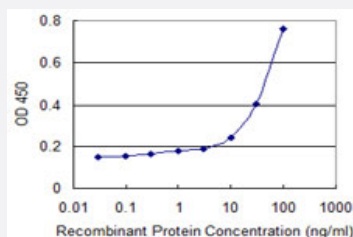


Western Blot (Transfected lysate)

Western Blot analysis of EXOSC1 expression in transfected 293T cell line by EXOSC1 monoclonal antibody (M01), clone 2E9.

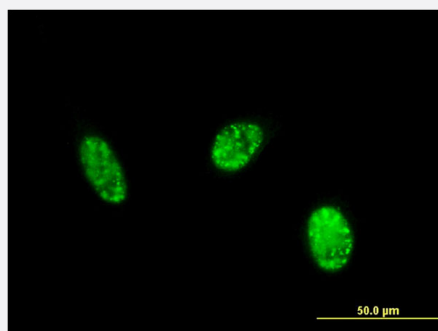
Lane 1: EXOSC1 transfected lysate (Predicted MW: 21.5 KDa).

Lane 2: Non-transfected lysate.



Sandwich ELISA (Recombinant protein)

Detection limit for recombinant GST tagged EXOSC1 is 3 ng/ml as a capture antibody.



Immunofluorescence

Immunofluorescence of monoclonal antibody to EXOSC1 on HeLa cell .
[antibody concentration 10 ug/ml]



Western Blot detection against Immunogen (47.19 KDa) .

Specification

Product Description	Mouse monoclonal antibody raised against a full-length recombinant EXOSC1.
Immunogen	EXOSC1 (AAH22067, 1 a.a. ~ 195 a.a) full-length recombinant protein with GST tag. MW of the GST tag alone is 26 KDa.
Sequence	MAPPVRYCIPGERLCNLEEGSPGSGTYTRHGYIFSSLAGCLMKSSENGALPVVSVVRETESQLLP DVGAMTCKVSSINSRFAKVHILYVGSMLPKNSFRGTIRKEDVRATEKDKVEIYKSFRPGDIVLAKVI SLGDAQSNYLLTTAENELGVVVAHSESGIQMVPISWCEMQCPKTHTKFRKVARVQPEFLQT
Host	Mouse
Reactivity	Human
Interspecies Antigen Sequence	Mouse (95); Rat (95)
Isotype	IgG2b Kappa
Quality Control Testing	Antibody Reactive Against Recombinant Protein. Western Blot detection against Immunogen (47.19 KDa) .
Storage Buffer	In 1x PBS, pH 7.4
Storage Instruction	Store at -20°C or lower. Aliquot to avoid repeated freezing and thawing.

Applications

● Western Blot (Transfected lysate)

Western Blot analysis of EXOSC1 expression in transfected 293T cell line by EXOSC1 monoclonal antibody (M01), clone 2E9.

Lane 1: EXOSC1 transfected lysate (Predicted MW: 21.5 KDa).

Lane 2: Non-transfected lysate.

[Protocol Download](#)

- Western Blot (Recombinant protein)

[Protocol Download](#)

- Sandwich ELISA (Recombinant protein)

Detection limit for recombinant GST tagged EXOSC1 is 3 ng/ml as a capture antibody.

[Protocol Download](#)

- ELISA

- Immunofluorescence

Immunofluorescence of monoclonal antibody to EXOSC1 on HeLa cell . [antibody concentration 10 ug/ml]

Gene Info — EXOSC1

Entrez GeneID [51013](#)

GeneBank Accession# [BC022067](#)

Protein Accession# [AAH22067](#)

Gene Name EXOSC1

Gene Alias CGI-108, CSL4, Csl4p, SKI4, Ski4p, hCsl4p, p13

Gene Description exosome component 1

Omim ID [606493](#)

Gene Ontology [Hyperlink](#)

Gene Summary This gene encodes a core component of the exosome. The mammalian exosome is required for rapid degradation of AU rich element-containing RNAs but not for poly(A) shortening. The association of this protein with the exosome is mediated by protein-protein interactions with ribosomal RNA-processing protein 42 and ribosomal RNA-processing protein 46. [provided by RefSeq]

Other Designations 3'-5' exoribonuclease CSL4 homolog|CSL4 exosomal core protein homolog|OTTHUMP00000020203|exosomal core protein CSL4|homolog of yeast exosomal core protein CSL4

Pathway

- [RNA degradation](#)