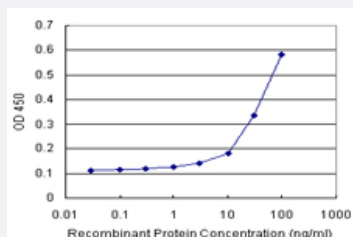


AFF4 (Human) Matched Antibody Pair

Catalog # H00027125-AP21 Size 1 Set

Applications



Sandwich ELISA detection sensitivity ranging from 10 ng/ml to 100 ng/ml.

Specification

Product Description	This antibody pair set comes with a matched antibody pair to detect and quantify the protein level of human AFF4.
Reactivity	Human
Interspecies Antigen Sequence	Mouse (92); Rat (92)
Quality Control Testing	Standard curve using recombinant protein (H00027125-P01) as an analyte. Sandwich ELISA detection sensitivity ranging from 10 ng/ml to 100 ng/ml.
Supplied Product	Antibody pair set content: 1. Capture antibody: rabbit MaxPab® affinity purified polyclonal anti-AFF4 (100 ug) 2. Detection antibody: mouse purified polyclonal anti-AFF4 (20 ug) *Reagents are sufficient for at least 1-2 x 96 well plates using recommended protocols.
Storage Instruction	Store reagents of the antibody pair set at -20°C or lower. Please aliquot to avoid repeated freeze thaw cycle. Reagents should be returned to -20°C storage immediately after use.

Applications

- ELISA Pair (Recombinant protein)

[Protocol Download](#)

Gene Info — AFF4

Entrez GeneID	27125
Gene Name	AFF4
Gene Alias	AF5Q31, MCEF, MGC75036
Gene Description	AF4/FMR2 family, member 4
Omim ID	604417
Gene Ontology	Hyperlink
Gene Summary	O
Other Designations	ALL1 fused gene from 5q31

Disease

- [Tobacco Use Disorder](#)