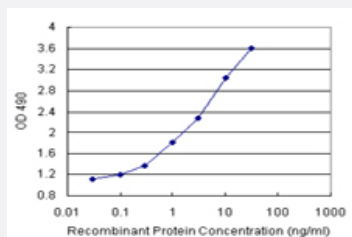


FGF21 (Human) Matched Antibody Pair

Catalog # H00026291-AP11

Size 1 Set

Applications



Sandwich ELISA detection sensitivity ranging from 0.1 ng/ml to 100 ng/ml.

Specification

Product Description	This antibody pair set comes with a matched antibody pair to detect and quantify the protein level of human FGF21.
Reactivity	Human
Interspecies Antigen Sequence	Mouse (79); Rat (79)
Quality Control Testing	Standard curve using recombinant protein (H00026291-P01) as an analyte. Sandwich ELISA detection sensitivity ranging from 0.1 ng/ml to 100 ng/ml.
Supplied Product	Antibody pair set content: 1. Capture antibody: rabbit MaxPab® affinity purified polyclonal anti-FGF21 (100 ug) 2. Detection antibody: mouse monoclonal anti-FGF21, IgG1 Kappa (20 ug) *Reagents are sufficient for at least 1-2 x 96 well plates using recommended protocols.
Storage Instruction	Store reagents of the antibody pair set at -20°C or lower. Please aliquot to avoid repeated freeze thaw cycle. Reagents should be returned to -20°C storage immediately after use.

Applications

- ELISA Pair (Recombinant protein)

[Protocol Download](#)

Gene Info — FGF21

Entrez GeneID [26291](#)

Gene Name FGF21

Gene Alias -

Gene Description fibroblast growth factor 21

Omim ID [609436](#)

Gene Ontology [Hyperlink](#)

Gene Summary The protein encoded by this gene is a member of the fibroblast growth factor (FGF) family. FGF family members possess broad mitogenic and cell survival activities and are involved in a variety of biological processes including embryonic development, cell growth, morphogenesis, tissue repair, tumor growth and invasion. The function of this growth factor has not yet been determined. [provided by RefSeq]

Other Designations -

Pathway

- [MAPK signaling pathway](#)
- [Melanoma](#)
- [Pathways in cancer](#)
- [Regulation of actin cytoskeleton](#)