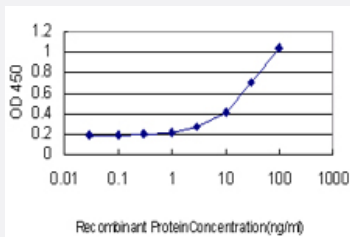


# FBXL3 monoclonal antibody (M01), clone 3C4

Catalog # H00026224-M01

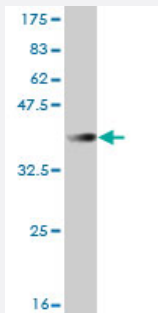
Size 100 ug

## Applications



### Sandwich ELISA (Recombinant protein)

Detection limit for recombinant GST tagged FBXL3 is approximately 1ng/ml as a capture antibody.



Western Blot detection against Immunogen (36.74 KDa) .

## Specification

<b>Product Description</b>	Mouse monoclonal antibody raised against a partial recombinant FBXL3.
<b>Immunogen</b>	FBXL3 (NP_036290, 1 a.a. ~ 100 a.a) partial recombinant protein with GST tag. MW of the GST tag alone is 26 KDa.
<b>Sequence</b>	MKRGGRDSDRNSSEEGTAEKSKKLRTTNEHSQTCDWGNLLQDILQVFKYLPLLDRAHASQVCR NWNQVFHMPDLWRCFEFELNQPATSYLKATHPELIK
<b>Host</b>	Mouse
<b>Reactivity</b>	Human

Interspecies Antigen Sequence	Mouse (97); Rat (97)
Isotype	IgG2a Kappa
Quality Control Testing	Antibody Reactive Against Recombinant Protein. Western Blot detection against Immunogen (36.74 KDa) .
Storage Buffer	In 1x PBS, pH 7.4
Storage Instruction	Store at -20°C or lower. Aliquot to avoid repeated freezing and thawing.

## Applications

- Western Blot (Recombinant protein)

[Protocol Download](#)

- Sandwich ELISA (Recombinant protein)

Detection limit for recombinant GST tagged FBXL3 is approximately 1ng/ml as a capture antibody.

[Protocol Download](#)

- ELISA

## Gene Info — FBXL3

Entrez GeneID	<a href="#">26224</a>
GeneBank Accession#	<a href="#">NM_012158</a>
Protein Accession#	<a href="#">NP_036290</a>
Gene Name	FBXL3
Gene Alias	FBL3, FBL3A, FBXL3A
Gene Description	F-box and leucine-rich repeat protein 3
Omim ID	<a href="#">605653</a>
Gene Ontology	<a href="#">Hyperlink</a>

**Gene Summary**

This gene encodes a member of the F-box protein family which is characterized by an approximately 40 amino acid motif, the F-box. The F-box proteins constitute one of the four subunits of ubiquitin protein ligase complex called SCFs (SKP1-cullin-F-box), which function in phosphorylation-dependent ubiquitination. The F-box proteins are divided into 3 classes: Fbws containing WD-40 domains, Fbls containing leucine-rich repeats, and Fbxs containing either different protein-protein interaction modules or no recognizable motifs. The protein encoded by this gene belongs to the Fbls class and, in addition to an F-box, contains several tandem leucine-rich repeats and is localized in the nucleus. [provided by RefSeq]

**Other Designations**

F-box and leucine-rich repeat protein 3A|F-box protein Fbl3a|OTTHUMP00000018519