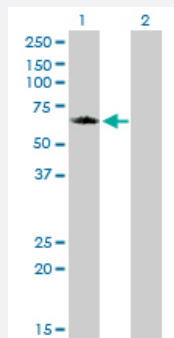


GGA1 monoclonal antibody (M02), clone 1G8

Catalog # H00026088-M02

Size 100 ug

Applications

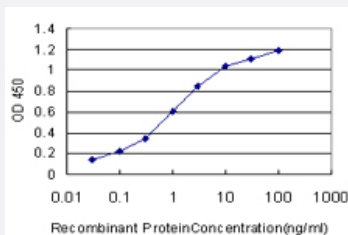


Western Blot (Transfected lysate)

Western Blot analysis of GGA1 expression in transfected 293T cell line by GGA1 monoclonal antibody (M02), clone 1G8.

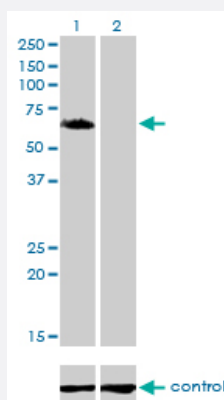
Lane 1: GGA1 transfected lysate (61.4 kDa).

Lane 2: Non-transfected lysate.



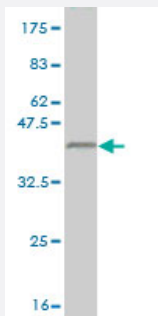
Sandwich ELISA (Recombinant protein)

Detection limit for recombinant GST tagged GGA1 is approximately 0.1 ng/ml as a capture antibody.



RNAi Knockdown (Antibody validated)

Western blot analysis of GGA1 over-expressed 293 cell line, cotransfected with GGA1 Validated Chimera RNAi (Cat # H00026088-R01V) (Lane 2) or non-transfected control (Lane 1). Blot probed with GGA1 monoclonal antibody (M02), clone 1G8 (Cat # H00026088-M02). GAPDH (36.1 kDa) used as specificity and loading control.



Western Blot detection against Immunogen (35.53 KDa) .

Specification

Product Description	Mouse monoclonal antibody raised against a full length recombinant GGA1.
Immunogen	GGA1 (AAH29388, 1 a.a. ~ 89 a.a) full-length recombinant protein with GST tag. MW of the GST tag alone is 26 KDa.
Sequence	MEPAMEPETLEARINRATNPLNKELDWASINGFCEQLNEDFEGPPLATRLLAHKIQSPQEWELIQ ALTVRRGEATIRPPPCDDTKGGQD
Host	Mouse
Reactivity	Human
Interspecies Antigen Sequence	Mouse (71); Rat (61)
Isotype	IgG1 Kappa
Quality Control Testing	Antibody Reactive Against Recombinant Protein. Western Blot detection against Immunogen (35.53 KDa) .
Storage Buffer	In 1x PBS, pH 7.4
Storage Instruction	Store at -20°C or lower. Aliquot to avoid repeated freezing and thawing.

Applications

● Western Blot (Transfected lysate)

Western Blot analysis of GGA1 expression in transfected 293T cell line by GGA1 monoclonal antibody (M02), clone 1G8.

Lane 1: GGA1 transfected lysate(61.4 KDa).

Lane 2: Non-transfected lysate.

[Protocol Download](#)

- Western Blot (Recombinant protein)

[Protocol Download](#)

- Sandwich ELISA (Recombinant protein)

Detection limit for recombinant GST tagged GGA1 is approximately 0.1ng/ml as a capture antibody.

[Protocol Download](#)

- ELISA

- RNAi Knockdown (Antibody validated)

Western blot analysis of GGA1 over-expressed 293 cell line, cotransfected with GGA1 Validated Chimera RNAi (Cat # H00026088-R01V) (Lane 2) or non-transfected control (Lane 1). Blot probed with GGA1 monoclonal antibody (M02), clone 1G8 (Cat # H00026088-M02). GAPDH (36.1 kDa) used as specificity and loading control.

[Protocol Download](#)

Gene Info — GGA1

Entrez GeneID [26088](#)

GeneBank Accession# [BC029388](#)

Protein Accession# [AAH29388](#)

Gene Name GGA1

Gene Alias -

Gene Description golgi associated, gamma adaptin ear containing, ARF binding protein 1

Omim ID [606004](#)

Gene Ontology [Hyperlink](#)

Gene Summary This gene encodes a member of the Golgi-localized, gamma adaptin ear-containing, ARF-binding (GGA) protein family. Members of this family are ubiquitous coat proteins that regulate the trafficking of proteins between the trans-Golgi network and the lysosome. These proteins share an amino-terminal VHS domain which mediates sorting of the mannose 6-phosphate receptors at the trans-Golgi network. They also contain a carboxy-terminal region with homology to the ear domain of gamma-adaptins. Multiple alternatively spliced transcript variants encoding different isoforms have been found for this gene. [provided by RefSeq]

Other Designations ADP-ribosylation factor binding protein 1|OTTHUMP00000028975|OTTHUMP00000042200|gamma-adaptin related protein 1

Pathway

- [Lysosome](#)