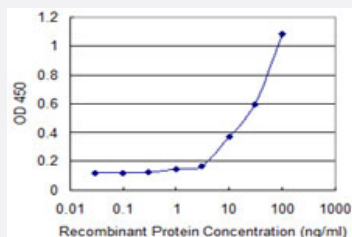


KLK13 monoclonal antibody (M01), clone 1G9

Catalog # H00026085-M01

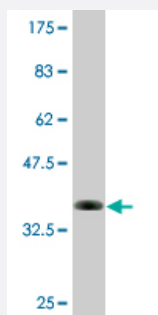
Size 100 ug

Applications



Sandwich ELISA (Recombinant protein)

Detection limit for recombinant GST tagged KLK13 is 1 ng/ml as a capture antibody.



Western Blot detection against Immunogen (36.63 KDa) .

Specification

Product Description

Mouse monoclonal antibody raised against a partial recombinant KLK13.

Immunogen

KLK13 (NP_056411.1, 179 a.a. ~ 277 a.a) partial recombinant protein with GST tag. MW of the GST tag alone is 26 KDa.

Sequence

ANIQLRSDEECRQVYPGKITDNMLCAGTKEGGKDSCEGDSGGPLVCNRTL YGMVSWGDFPCGQP
DRPGVYTRVSRVYLWIRETIRKYETQQQKWLKGPQ

Host

Mouse

Reactivity

Human

Interspecies Antigen Sequence	Mouse (78); Rat (79)
Isotype	IgG2b Kappa
Quality Control Testing	Antibody Reactive Against Recombinant Protein. Western Blot detection against Immunogen (36.63 KDa) .
Storage Buffer	In 1x PBS, pH 7.4
Storage Instruction	Store at -20°C or lower. Aliquot to avoid repeated freezing and thawing.

Applications

- Western Blot (Recombinant protein)

[Protocol Download](#)

- Sandwich ELISA (Recombinant protein)

Detection limit for recombinant GST tagged KLK13 is 1 ng/ml as a capture antibody.

[Protocol Download](#)

- ELISA

Gene Info — KLK13

Entrez GeneID	26085
GeneBank Accession#	NM_015596
Protein Accession#	NP_056411.1
Gene Name	KLK13
Gene Alias	DKFZp586J1923, KLK-L4, KLKL4
Gene Description	kallikrein-related peptidase 13
Omim ID	605505
Gene Ontology	Hyperlink

Gene Summary

Kallikreins are a subgroup of serine proteases having diverse physiological functions. Growing evidence suggests that many kallikreins are implicated in carcinogenesis and some have potential as novel cancer and other disease biomarkers. This gene is one of the fifteen kallikrein subfamily members located in a cluster on chromosome 19. Expression of this gene is regulated by steroid hormones and may be useful as a marker for breast cancer. An additional transcript variant has been identified, but its full length sequence has not been determined. [provided by RefSeq]

Other Designations

kallikrein 13|kallikrein-like gene 4

Disease

- [Genetic Predisposition to Disease](#)
- [Prostatic Neoplasms](#)