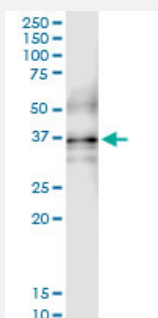


QPCT (Human) IP-WB Antibody Pair

Catalog # H00025797-PW1

Size 1 Set

Applications



Immunoprecipitation of QPCT transfected lysate using rabbit polyclonal anti-QPCT and Protein A Magnetic Bead ([U0007](#)), and immunoblotted with mouse purified polyclonal anti-QPCT.

Specification

Product Description	This IP-WB antibody pair set comes with one antibody for immunoprecipitation and another to detect the precipitated protein in western blot.
Reactivity	Human
Interspecies Antigen Sequence	Mouse (82); Rat (69)
Quality Control Testing	Immunoprecipitation-Western Blot (IP-WB) Immunoprecipitation of QPCT transfected lysate using rabbit polyclonal anti-QPCT and Protein A Magnetic Bead (U0007), and immunoblotted with mouse purified polyclonal anti-QPCT.
Supplied Product	Antibody pair set content: 1. Antibody pair for IP: rabbit polyclonal anti-QPCT (300 ul) 2. Antibody pair for WB: mouse purified polyclonal anti-QPCT (50 ug)
Storage Instruction	Store reagents of the antibody pair set at -20°C or lower. Please aliquot to avoid repeated freeze thaw cycle. Reagents should be returned to -20°C storage immediately after use.

Applications

- Immunoprecipitation-Western Blot

[Protocol Download](#)

Gene Info — QPCT

Entrez GeneID [25797](#)

Gene Name QPCT

Gene Alias GCT, QC

Gene Description glutaminyl-peptide cyclotransferase

Omim ID [607065](#)

Gene Ontology [Hyperlink](#)

Gene Summary This gene encodes human pituitary glutaminyl cyclase, which is responsible for the presence of pyroglutamyl residues in many neuroendocrine peptides. The amino acid sequence of this enzyme is 86% identical to that of bovine glutaminyl cyclase. [provided by RefSeq]

Other Designations glutaminyl cyclase

Disease

- [Genetic Predisposition to Disease](#)
- [Hypertension](#)
- [Osteoporosis](#)