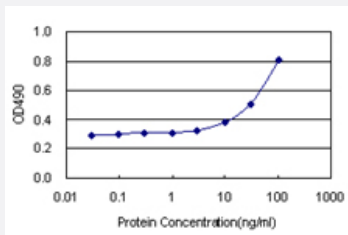


QPRT (Human) Matched Antibody Pair

Catalog # H00023475-AP21

Size 1 Set

Applications



Sandwich ELISA detection sensitivity ranging from 3 ng/ml to 100 ng/ml.

Specification

Product Description	This antibody pair set comes with a matched antibody pair to detect and quantify the protein level of human QPRT.
Reactivity	Human
Interspecies Antigen Sequence	Mouse (84); Rat (82)
Quality Control Testing	Standard curve using recombinant protein (H00023475-P01) as an analyte. Sandwich ELISA detection sensitivity ranging from 3 ng/ml to 100 ng/ml.
Supplied Product	Antibody pair set content: 1. Capture antibody: rabbit MaxPab® affinity purified polyclonal anti-QPRT (100 ug) 2. Detection antibody: mouse purified polyclonal anti-QPRT (20 ug) *Reagents are sufficient for at least 1-2 x 96 well plates using recommended protocols.
Storage Instruction	Store reagents of the antibody pair set at -20°C or lower. Please aliquot to avoid repeated freeze thaw cycle. Reagents should be returned to -20°C storage immediately after use.

Applications

- [ELISA Pair \(Recombinant protein\)](#)

[Protocol Download](#)

Gene Info — QPRT

Entrez GeneID [23475](#)

Gene Name QPRT

Gene Alias QPRTase

Gene Description quinolinate phosphoribosyltransferase

Omim ID [606248](#)

Gene Ontology [Hyperlink](#)

Gene Summary This gene encodes a key enzyme in catabolism of quinolinate, an intermediate in the tryptophan-nicotinamide adenine dinucleotide pathway. Quinolinate acts as a most potent endogenous excitotoxin to neurons. Elevation of quinolinate levels in the brain has been linked to the pathogenesis of neurodegenerative disorders such as epilepsy, Alzheimer's disease, and Huntington's disease. [provided by RefSeq]

Other Designations nicotinate-nucleotide pyrophosphorylase (carboxylating)

Pathway

- [Biosynthesis of alkaloids derived from ornithine](#)
- [Metabolic pathways](#)
- [Nicotinate and nicotinamide metabolism](#)