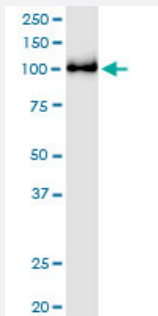


AOF2 (Human) IP-WB Antibody Pair

Catalog # H00023028-PW1

Size 1 Set

Applications



Immunoprecipitation of AOF2 transfected lysate using rabbit polyclonal anti-AOF2 and Protein A Magnetic Bead ([U0007](#)), and immunoblotted with mouse polyclonal anti-AOF2.

Specification

Product Description	This IP-WB antibody pair set comes with one antibody for immunoprecipitation and another to detect the precipitated protein in western blot.
Reactivity	Human
Interspecies Antigen Sequence	Mouse (95); Rat (97)
Quality Control Testing	Immunoprecipitation-Western Blot (IP-WB) Immunoprecipitation of AOF2 transfected lysate using rabbit polyclonal anti-AOF2 and Protein A Magnetic Bead (U0007), and immunoblotted with mouse polyclonal anti-AOF2.
Supplied Product	Antibody pair set content: 1. Antibody pair for IP: rabbit polyclonal anti-AOF2 (300 ul) 2. Antibody pair for WB: mouse polyclonal anti-AOF2 (50 ul)
Storage Instruction	Store reagents of the antibody pair set at -20°C or lower. Please aliquot to avoid repeated freeze thaw cycle. Reagents should be returned to -20°C storage immediately after use.

Applications

- Immunoprecipitation-Western Blot

[Protocol Download](#)

Gene Info — AOF2

Entrez GeneID	23028
---------------	-----------------------

Gene Name	AOF2
-----------	------

Gene Alias	BHC110, KDM1, KIAA0601, LSD1
------------	------------------------------

Gene Description	amine oxidase (flavin containing) domain 2
------------------	--

Omim ID	609132
---------	------------------------

Gene Ontology	Hyperlink
---------------	---------------------------

Gene Summary	This gene encodes a nuclear protein containing a SWIRM domain, a FAD-binding motif, and an amine oxidase domain. This protein is a component of several histone deacetylase complexes, through it silences genes by functioning as a histone demethylase. Alternative splicing results in multiple transcript variants. [provided by RefSeq]
--------------	--

Other Designations	BRAF35-HDAC complex protein BHC110 FAD-binding protein BRAF35-HDAC complex, 110 kDa subunit lysine (K)-specific demethylase 1 lysine-specific histone demethylase 1
--------------------	---