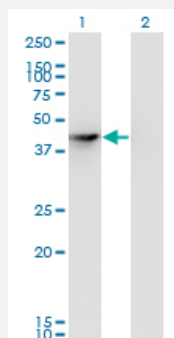


SEPHS1 monoclonal antibody (M04), clone 3G3

Catalog # H00022929-M04

Size 100 ug

Applications

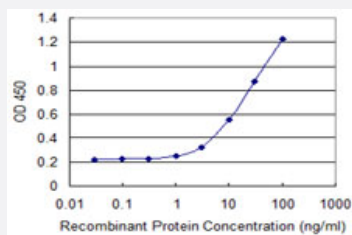


Western Blot (Transfected lysate)

Western Blot analysis of SEPHS1 expression in transfected 293T cell line by SEPHS1 monoclonal antibody (M04), clone 3G3.

Lane 1: SEPHS1 transfected lysate (Predicted MW: 42.9 KDa).

Lane 2: Non-transfected lysate.



Sandwich ELISA (Recombinant protein)

Detection limit for recombinant GST tagged SEPHS1 is 0.3 ng/ml as a capture antibody.



Western Blot detection against Immunogen (36.3 KDa) .

Specification

Product Description

Mouse monoclonal antibody raised against a partial recombinant SEPHS1.

Immunogen	SEPHS1 (NP_036379, 1 a.a. ~ 96 a.a) partial recombinant protein with GST tag. MW of the GST tag alone is 26 KDa.
Sequence	MSTRESFNPESEYELDKSFRLTRFTELKGTGCKVPQDVLQKLLESLQENHFQEDEQFLGAVMPRL GIGMDTCVIPLRHGGLSLVQTTDYYPVDDP
Host	Mouse
Reactivity	Human
Interspecies Antigen Sequence	Mouse (99); Rat (99)
Isotype	IgG2a Kappa
Quality Control Testing	Antibody Reactive Against Recombinant Protein. Western Blot detection against Immunogen (36.3 KDa) .
Storage Buffer	In 1x PBS, pH 7.4
Storage Instruction	Store at -20°C or lower. Aliquot to avoid repeated freezing and thawing.

Applications

- Western Blot (Transfected lysate)

Western Blot analysis of SEPHS1 expression in transfected 293T cell line by SEPHS1 monoclonal antibody (M04), clone 3G3.

Lane 1: SEPHS1 transfected lysate (Predicted MW: 42.9 KDa).

Lane 2: Non-transfected lysate.

[Protocol Download](#)

- Western Blot (Recombinant protein)

[Protocol Download](#)

- Sandwich ELISA (Recombinant protein)

Detection limit for recombinant GST tagged SEPHS1 is 0.3 ng/ml as a capture antibody.

[Protocol Download](#)

- ELISA

Gene Info — SEPHS1

Entrez GeneID	22929
GeneBank Accession#	NM_012247
Protein Accession#	NP_036379
Gene Name	SEPHS1
Gene Alias	MGC4980, SELD, SPS, SPS1
Gene Description	selenophosphate synthetase 1
Omim ID	600902
Gene Ontology	Hyperlink
Gene Summary	This protein encodes an enzyme that synthesizes selenophosphate from selenide and ATP. Selenophosphate is the selenium donor used to synthesize selenocysteine, which is co-translationally incorporated into selenoproteins at in-frame UGA codons. [provided by RefSeq]
Other Designations	OTTHUMP00000019139[selenide, water dikinase 1[selenium donor protein[selenophosphate synthase

Pathway

- [Metabolic pathways](#)
- [Selenoamino acid metabolism](#)

Disease

- [Alzheimer Disease](#)
- [Genetic Predisposition to Disease](#)