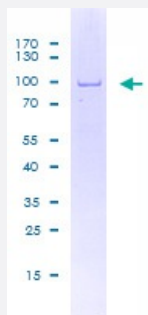


# DHX30 (Human) Recombinant Protein (P01)

Catalog # H00022907-P01

Size 25 ug, 10 ug

## Applications



## Specification

### Product Description

Human DHX30 full-length ORF (AAH14237.1, 1 a.a. - 501 a.a.) recombinant protein with GST tag at N-terminal.

### Sequence

MHESKYLILPVHSNIPMMDQKAIFQQPPVGVKMLATNIAETSITNDVHVVD SGLHKEERYDLKTK  
VSCLETWVSRANVIQRRGRAGRCQSGFAYHLFPRSRLEKMVPFQVPEILRTPLENLVLQAKIHM  
PEKTAVEFLSKAVDSPNIKAVDEAVILLQEIGVLDQREYLTTLGQRLAHISTDPRLAKAMLAIFRCL  
HPLLVVVVSCLTRDPFSSSLQNRAEVDKVKALLSHDSGSDHLAFVRAVAGWEEVLRWQDRSSRE  
NYLEENLLYAPSLRFIHLIKQFSENIEAFLVGKPSDCTLASAQCNEYSEEEELVKGVL MAGLYPN  
LIQVRQGVTRQGKFKPNSVTYRTKSGNILLHKSTINREATRLRSRWLT YFMAVKSNGSVFVRDSS  
QVHPLAVLLLTGDVHIRDDGRRATISLSDSDLLRLEGDSRTVWLLKELRRALGRMVERSLRSEL  
AALPPSVQEEHGQLLALLAELLRGPCGSFDVRKTADD

### Host

Wheat Germ (in vitro)

### Theoretical MW (kDa)

82.90000000000001

### Preparation Method

[in vitro wheat germ expression system](#)

### Purification

Glutathione Sepharose 4 Fast Flow

### Quality Control Testing

12.5% SDS-PAGE Stained with Coomassie Blue

### Storage Buffer

50 mM Tris-HCl, 10 mM reduced Glutathione, pH=8.0 in the elution buffer.

### Storage Instruction

Store at -80°C. Aliquot to avoid repeated freezing and thawing.

## Note

Best use within three months from the date of receipt of this protein.

## Applications

- Enzyme-linked Immunoabsorbent Assay
- Western Blot (Recombinant protein)
- Antibody Production
- Protein Array

## Gene Info — DHX30

Entrez GeneID [22907](#)

GeneBank Accession# [BC014237.2](#)

Protein Accession# [AAH14237.1](#)

Gene Name DHX30

Gene Alias DDX30, FLJ11214, KIAA0890, Ret-CoR

Gene Description DEAH (Asp-Glu-Ala-His) box polypeptide 30

Gene Ontology [Hyperlink](#)

**Gene Summary** DEAD box proteins, characterized by the conserved motif Asp-Glu-Ala-Asp (DEAD), are putative RNA helicases. They are implicated in a number of cellular processes involving alteration of RNA secondary structure such as translation initiation, nuclear and mitochondrial splicing, and ribosome and spliceosome assembly. Based on their distribution patterns, some members of this DEAD box protein family are believed to be involved in embryogenesis, spermatogenesis, and cellular growth and division. This gene encodes a member of this family. The encoded protein has 97% sequence identity with the mouse HELG protein. Alternatively spliced transcript variants encoding distinct isoforms have been found for this gene. [provided by RefSeq]

**Other Designations** DEAD/H (Asp-Glu-Ala-Asp/His) box polypeptide 30|retina co-repressor

## Disease

- [Tobacco Use Disorder](#)