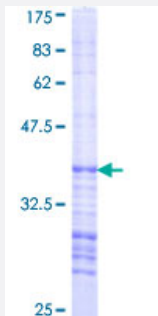


AAK1 (Human) Recombinant Protein (Q01)

Catalog # H00022848-Q01

Size 25 ug, 10 ug

Applications



Specification

Product Description	Human AAK1 partial ORF (AAH02695, 315 a.a. - 415 a.a.) recombinant protein with GST-tag at N-terminal.
Sequence	LKKECPIPNVQNSPIAKLPEPVKASEAAAKKTQPKARLTDPIPTTETSIAPRQRPKAGQTQPNPGI LPIQPALTPRKRATVQPPPQAAGSSNQPGLLASV
Host	Wheat Germ (in vitro)
Theoretical MW (kDa)	36.74
Interspecies Antigen Sequence	Mouse (94); Rat (94)
Preparation Method	in vitro wheat germ expression system
Purification	Glutathione Sepharose 4 Fast Flow
Quality Control Testing	12.5% SDS-PAGE Stained with Coomassie Blue.
Storage Buffer	50 mM Tris-HCl, 10 mM reduced Glutathione, pH=8.0 in the elution buffer.
Storage Instruction	Store at -80°C. Aliquot to avoid repeated freezing and thawing.
Note	Best use within three months from the date of receipt of this protein.

Applications

- Enzyme-linked Immunoabsorbent Assay
- Western Blot (Recombinant protein)
- Antibody Production
- Protein Array

Gene Info — AAK1

Entrez GeneID	22848
GeneBank Accession#	BC002695
Protein Accession#	AAH02695
Gene Name	AAK1
Gene Alias	DKFZp686F03202, DKFZp686K16132, FLJ23712, FLJ25931, FLJ31060, FLJ42882, FLJ45252, KIAA1048, MGC138170, MGC164568, MGC164570
Gene Description	AP2 associated kinase 1
Gene Ontology	Hyperlink
Gene Summary	Adaptor-related protein complex 2 (AP-2 complexes) functions during receptor-mediated endocytosis to trigger clathrin assembly, interact with membrane-bound receptors, and recruit encodytic accessory factors. This gene encodes a member of the SNF1 subfamily of Ser/Thr protein kinases. The protein interacts with and phosphorylates a subunit of the AP-2 complex, which promotes binding of AP-2 to sorting signals found in membrane-bound receptors and subsequent receptor endocytosis. Its kinase activity is stimulated by clathrin. Alternatively spliced transcript variants have been described, but their biological validity has not been determined. [provided by RefSeq]
Other Designations	adaptor-associated kinase 1

Disease

- [Parkinson Disease](#)
- [Tobacco Use Disorder](#)