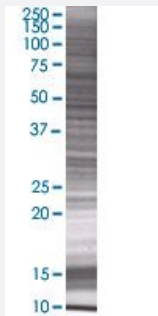


KLF8 293T Cell Transient Overexpression Lysate(Denatured)

Catalog # H00011279-T01

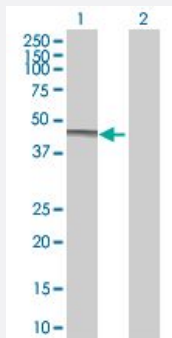
Size 100 uL

Applications



SDS-PAGE Gel

KLF8 transfected lysate.



Western Blot

Lane 1: KLF8 transfected lysate (39.6 KDa)

Lane 2: Non-transfected lysate.

Specification

Transfected Cell Line	293T
Plasmid	pCMV-KLF8 full-length
Host	Human
Theoretical MW (kDa)	39.6
Interspecies Antigen Sequence	Mouse (83)

Quality Control Testing

Transient overexpression cell lysate was tested with Anti-KLF8 antibody ([H00011279-B01](#)) by Western Blots.
SDS-PAGE Gel
KLF8 transfected lysate.
Western Blot
Lane 1: KLF8 transfected lysate (39.6 KDa)
Lane 2: Non-transfected lysate.

Storage Buffer

1X Sample Buffer (50 mM Tris-HCl, 2% SDS, 10% glycerol, 300 mM 2-mercaptoethanol, 0.01% Bromophenol blue)

Storage Instruction

Store at -80°C. Aliquot to avoid repeated freezing and thawing.

Applications

- Western Blot

Gene Info — KLF8

Entrez GeneID[11279](#)**GeneBank Accession#**[NM_007250.3](#)**Protein Accession#**[NP_009181.2](#)**Gene Name**

KLF8

Gene Alias

BKLF3, DKFZp686O08126, DXS741, MGC138314, ZNF741

Gene Description

Kruppel-like factor 8

Omim ID[300286](#)**Gene Ontology**[Hyperlink](#)**Gene Summary**

This gene encodes a protein which is a member of the Sp/KLF family of transcription factors. Members of this family contain a C-terminal DNA-binding domain with three Kruppel-like zinc fingers. The encoded protein is thought to play an important role in the regulation of epithelial to mesenchymal transition, a process which occurs normally during development but also during metastasis. A pseudogene has been identified on chromosome 16. Alternative splicing results in multiple transcript variants. [provided by RefSeq]

Other Designations

zinc finger protein 741

Disease

- [Diabetes Mellitus](#)
- [Genetic Predisposition to Disease](#)