

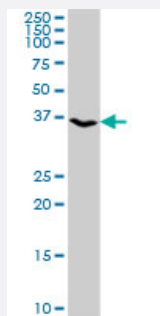
MaxPab®

# KLF8 purified MaxPab rabbit polyclonal antibody (D01P)

Catalog # H00011279-D01P

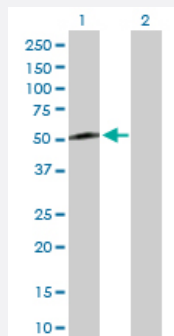
Size 100 ug

## Applications



### Western Blot (Tissue lysate)

KLF8 MaxPab rabbit polyclonal antibody. Western Blot analysis of KLF8 expression in human colon.



### Western Blot (Transfected lysate)

Western Blot analysis of KLF8 expression in transfected 293T cell line ([H00011279-T01](#)) by KLF8 MaxPab polyclonal antibody.

Lane 1: KLF8 transfected lysate(39.30 KDa).

Lane 2: Non-transfected lysate.

## Specification

### Product Description

Rabbit polyclonal antibody raised against a full-length human KLF8 protein.

### Immunogen

KLF8 (NP\_009181.2, 1 a.a. ~ 359 a.a) full-length human protein.

### Sequence

MVDMDKLIINNLEVQLNSEGGSMQVFKQVTASVRNRDPPEIEYRSNMTSPTLLDANPMENPALFN  
DIKIEPPEELLASDFSLPQVEPVDLSFHKPKAPLQPASMLQAPIRPPKPQSSPQTLVVSTSTSDM  
STSANIPTVLTPGSVL TSSQSTGSQQILHVIHTIPSVSLPNKMGGGLKTIPVVVQSLPMVYTTLPADGG  
PAAITVPLIGGDGKNAGSVKVDPTSMSPLEIPSDSEESTIESGSSALQSLQGLQQEPAAMAQMQG  
EESLDLKRRIHQCDFAGCSKVYTKSSHLKAHRRRIHTGEKPYKCTWDGCSWKFARSDDELTRHFR  
KHTGIKPFRCCTDCNRSFSRSDHLSLHRRRHDTM

### Host

Rabbit

Reactivity	Human
Interspecies Antigen Sequence	Mouse (83)
Quality Control Testing	Antibody reactive against mammalian transfected lysate.
Storage Buffer	In 1x PBS, pH 7.4
Storage Instruction	Store at -20°C or lower. Aliquot to avoid repeated freezing and thawing.

## Applications

- Western Blot (Tissue lysate)

KLF8 MaxPab rabbit polyclonal antibody. Western Blot analysis of KLF8 expression in human colon.

[Protocol Download](#)

- Western Blot (Transfected lysate)

Western Blot analysis of KLF8 expression in transfected 293T cell line ([H00011279-T01](#)) by KLF8 MaxPab polyclonal antibody.

Lane 1: KLF8 transfected lysate(39.30 KDa).

Lane 2: Non-transfected lysate.

[Protocol Download](#)

## Gene Info — KLF8

Entrez GeneID	<a href="#">11279</a>
GeneBank Accession#	<a href="#">NM_007250.3</a>
Protein Accession#	<a href="#">NP_009181.2</a>
Gene Name	KLF8
Gene Alias	BKLF3, DKFZp686O08126, DXS741, MGC138314, ZNF741
Gene Description	Kruppel-like factor 8
Omim ID	<a href="#">300286</a>
Gene Ontology	<a href="#">Hyperlink</a>

**Gene Summary**

This gene encodes a protein which is a member of the Sp/KLF family of transcription factors. Members of this family contain a C-terminal DNA-binding domain with three Kruppel-like zinc fingers. The encoded protein is thought to play an important role in the regulation of epithelial to mesenchymal transition, a process which occurs normally during development but also during metastasis. A pseudogene has been identified on chromosome 16. Alternative splicing results in multiple transcript variants. [provided by RefSeq]

**Other Designations**

zinc finger protein 741

**Disease**

- [Diabetes Mellitus](#)
- [Genetic Predisposition to Disease](#)