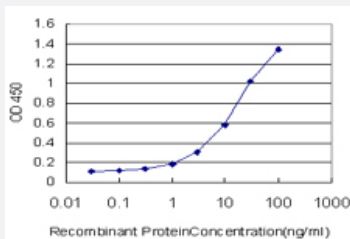


# ADAMTS8 monoclonal antibody (M01), clone 5A3

Catalog # H00011095-M01

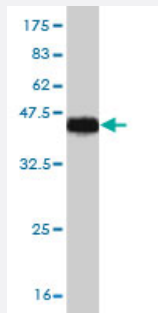
Size 100 ug

## Applications



### Sandwich ELISA (Recombinant protein)

Detection limit for recombinant GST tagged ADAMTS8 is approximately 0.3ng/ml as a capture antibody.



Western Blot detection against Immunogen (37.84 KDa) .

## Specification

Product Description	Mouse monoclonal antibody raised against a partial recombinant ADAMTS8.
Immunogen	ADAMTS8 (NP_008968, 781 a.a. ~ 890 a.a) partial recombinant protein with GST tag. MW of the GST tag alone is 26 KDa.
Sequence	RPLPEPLTVQLLTVPGEVFPPKVKYTFVPNDVDFSMQSSKERATTNIIQPLLHAQWVLGDWSEC SSTCGAGWQRRTVECRDPSPGQASATCNKALKPEDAKPCESQLCPL
Host	Mouse
Reactivity	Human

Interspecies Antigen Sequence	Mouse (83); Rat (84)
Isotype	IgG2a Kappa
Quality Control Testing	Antibody Reactive Against Recombinant Protein. Western Blot detection against Immunogen (37.84 KDa) .
Storage Buffer	In 1x PBS, pH 7.4
Storage Instruction	Store at -20°C or lower. Aliquot to avoid repeated freezing and thawing.

## Applications

- Western Blot (Recombinant protein)

[Protocol Download](#)

- Sandwich ELISA (Recombinant protein)

Detection limit for recombinant GST tagged ADAMTS8 is approximately 0.3ng/ml as a capture antibody.

[Protocol Download](#)

- ELISA

## Gene Info — ADAMTS8

Entrez GeneID	<a href="#">11095</a>
GeneBank Accession#	<a href="#">NM_007037</a>
Protein Accession#	<a href="#">NP_008968</a>
Gene Name	ADAMTS8
Gene Alias	ADAM-TS8, FLJ41712, METH2
Gene Description	ADAM metallopeptidase with thrombospondin type 1 motif, 8
Omim ID	<a href="#">605175</a>
Gene Ontology	<a href="#">Hyperlink</a>

**Gene Summary**

This gene encodes a member of the ADAMTS (a disintegrin and metalloproteinase with thrombospondin motifs) protein family. Members of the family share several distinct protein modules, including a propeptide region, a metalloproteinase domain, a disintegrin-like domain, and a thrombospondin type 1 (TS) motif. Individual members of this family differ in the number of C-terminal TS motifs, and some have unique C-terminal domains. The enzyme encoded by this gene contains two C-terminal TS motifs, and disrupts angiogenesis in vivo. A number of disorders have been mapped in the vicinity of this gene, most notably lung neoplasms. [provided by RefSeq]

**Other Designations**

a disintegrin-like and metalloprotease (reprolysin type) with thrombospondin type 1 motif, 8

**Publication Reference**

- [EXTRACELLULAR AND MEMBRANE-ASSOCIATED PROSTATE CANCER MARKERS.](#)

George G. Klee, George Vasmatazis, Farhad Kosari, Eric W. Klee

United States Patent Application Publication 2010 Feb; [Epub].

Application: Array, Mammal, Prostate cancer