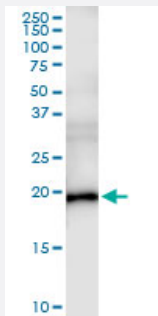


ESM1 (Human) IP-WB Antibody Pair

Catalog # H00011082-PW1

Size 1 Set

Applications



Immunoprecipitation of ESM1 transfected lysate using rabbit polyclonal anti-ESM1 and Protein A Magnetic Bead ([U0007](#)), and immunoblotted with mouse polyclonal anti-ESM1.

Specification

Product Description	This IP-WB antibody pair set comes with one antibody for immunoprecipitation and another to detect the precipitated protein in western blot.
Reactivity	Human
Interspecies Antigen Sequence	Mouse (74); Rat (74)
Quality Control Testing	Immunoprecipitation-Western Blot (IP-WB) Immunoprecipitation of ESM1 transfected lysate using rabbit polyclonal anti-ESM1 and Protein A Magnetic Bead (U0007), and immunoblotted with mouse polyclonal anti-ESM1.
Supplied Product	Antibody pair set content: 1. Antibody pair for IP: rabbit polyclonal anti-ESM1 (300 ul) 2. Antibody pair for WB: mouse polyclonal anti-ESM1 (50 ul)
Storage Instruction	Store reagents of the antibody pair set at -20°C or lower. Please aliquot to avoid repeated freeze thaw cycle. Reagents should be returned to -20°C storage immediately after use.

Applications

- Immunoprecipitation-Western Blot

[Protocol Download](#)

Gene Info — ESM1

Entrez GeneID [11082](#)

Gene Name ESM1

Gene Alias endocan

Gene Description endothelial cell-specific molecule 1

Omim ID [601521](#)

Gene Ontology [Hyperlink](#)

Gene Summary This gene encodes a secreted protein which is mainly expressed in the endothelial cells in human lung and kidney tissues. The expression of this gene is regulated by cytokines, suggesting that it may play a role in endothelium-dependent pathological disorders. The transcript contains multiple polyadenylation and mRNA instability signals. Two transcript variants encoding different isoforms have been found for this gene. [provided by RefSeq]

Other Designations OTTHUMP00000122501

Disease

- [Tobacco Use Disorder](#)