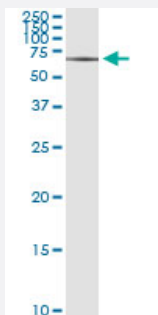


SOX30 (Human) IP-WB Antibody Pair

Catalog # H00011063-PW1

Size 1 Set

Applications



Immunoprecipitation of SOX30 transfected lysate using rabbit polyclonal anti-SOX30 and Protein A Magnetic Bead ([U0007](#)), and immunoblotted with mouse purified polyclonal anti-SOX30.

Specification

Product Description	This IP-WB antibody pair set comes with one antibody for immunoprecipitation and another to detect the precipitated protein in western blot.
Reactivity	Human
Interspecies Antigen Sequence	Mouse (75)
Quality Control Testing	Immunoprecipitation-Western Blot (IP-WB) Immunoprecipitation of SOX30 transfected lysate using rabbit polyclonal anti-SOX30 and Protein A Magnetic Bead (U0007), and immunoblotted with mouse purified polyclonal anti-SOX30.
Supplied Product	Antibody pair set content: 1. Antibody pair for IP: rabbit polyclonal anti-SOX30 (300 ul) 2. Antibody pair for WB: mouse purified polyclonal anti-SOX30 (50 ug)
Storage Instruction	Store reagents of the antibody pair set at -20°C or lower. Please aliquot to avoid repeated freeze thaw cycle. Reagents should be returned to -20°C storage immediately after use.

Applications

- Immunoprecipitation-Western Blot

[Protocol Download](#)

Gene Info — SOX30

Entrez GeneID	11063
---------------	-----------------------

Gene Name	SOX30
-----------	-------

Gene Alias	-
------------	---

Gene Description	SRY (sex determining region Y)-box 30
------------------	---------------------------------------

Omim ID	606698
---------	------------------------

Gene Ontology	Hyperlink
---------------	---------------------------

Gene Summary	This gene encodes a member of the SOX (SRY-related HMG-box) family of transcription factors involved in the regulation of embryonic development and in the determination of the cell fate. The encoded protein may act as a transcriptional regulator after forming a protein complex with other proteins. The protein may be involved in the differentiation of developing male germ cells. Two transcript variants encoding distinct isoforms have been identified for this gene. [provided by RefSeq]
--------------	--

Other Designations	Sox30 protein type II
--------------------	-----------------------