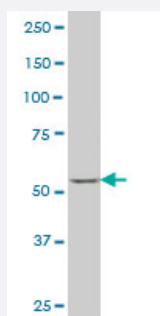


# SOX30 monoclonal antibody (M02), clone 6H1

Catalog # H00011063-M02

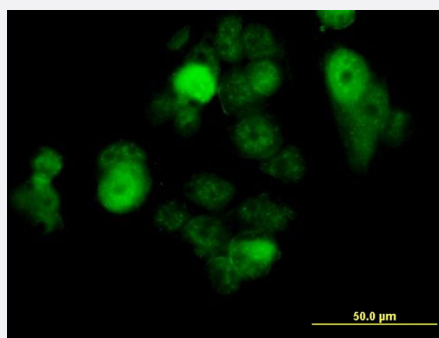
Size 100 ug

## Applications



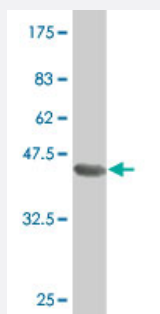
### Western Blot (Cell lysate)

SOX30 monoclonal antibody (M02), clone 6H1 Western Blot analysis of SOX30 expression in MCF-7 ( Cat # L046V1 ).



### Immunofluorescence

Immunofluorescence of monoclonal antibody to SOX30 on MCF-7 cell .  
[antibody concentration 10 ug/ml]



Western Blot detection against Immunogen (37.84 KDa) .

## Specification

### Product Description

Mouse monoclonal antibody raised against a partial recombinant SOX30.

|                                      |  |
|--------------------------------------|--|
| <b>Immunogen</b>                     | SOX30 (NP_848511, 644 a.a. ~ 753 a.a) partial recombinant protein with GST tag. MW of the GST tag alone is 26 KDa. |
| <b>Sequence</b>                      | SMPECLSYIEDRYPKHEGIFSTLNRDYSFRDYSSECTHSENSRSCENMNGTSYYNSHSHSGEENLNPVPQLDIGTLENVFTAPTSTPSSIQQVNVTDSEEEEEKVLRLD      |
| <b>Host</b>                          | Mouse  |
| <b>Reactivity</b>                    | Human  |
| <b>Interspecies Antigen Sequence</b> | Mouse (75)   |
| <b>Isotype</b>                       | IgG2a Kappa  |
| <b>Quality Control Testing</b>       | Antibody Reactive Against Recombinant Protein.<br>Western Blot detection against Immunogen (37.84 KDa) .           |
| <b>Storage Buffer</b>                | In 1x PBS, pH 7.4  |
| <b>Storage Instruction</b>           | Store at -20°C or lower. Aliquot to avoid repeated freezing and thawing.   |

## Applications

- Western Blot (Cell lysate)

SOX30 monoclonal antibody (M02), clone 6H1 Western Blot analysis of SOX30 expression in MCF-7 ( Cat # L046V1 ).

[Protocol Download](#)

- Western Blot (Recombinant protein)

[Protocol Download](#)

- ELISA

- Immunofluorescence

Immunofluorescence of monoclonal antibody to SOX30 on MCF-7 cell . [antibody concentration 10 ug/ml]

## Gene Info — SOX30

**Entrez GeneID** [11063](#)

**GeneBank Accession#** [NM\\_178424](#)

|                    |  |
|--------------------|--|
| Protein Accession# | <a href="#">NP_848511</a>  |
| Gene Name          | SOX30  |
| Gene Alias         | -  |
| Gene Description   | SRY (sex determining region Y)-box 30  |
| Omim ID            | <a href="#">606698</a>   |
| Gene Ontology      | <a href="#">Hyperlink</a>  |
| Gene Summary       | <p>This gene encodes a member of the SOX (SRY-related HMG-box) family of transcription factors involved in the regulation of embryonic development and in the determination of the cell fate. The encoded protein may act as a transcriptional regulator after forming a protein complex with other proteins. The protein may be involved in the differentiation of developing male germ cells. Two transcript variants encoding distinct isoforms have been identified for this gene. [provided by RefSeq</p> |
| Other Designations | Sox30 protein type II  |