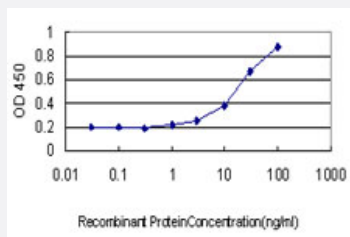


# SOX30 monoclonal antibody (M01), clone 1A11

Catalog # H00011063-M01

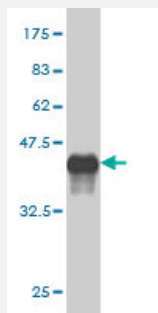
Size 100 ug

## Applications



### Sandwich ELISA (Recombinant protein)

Detection limit for recombinant GST tagged SOX30 is approximately 1 ng/ml as a capture antibody.



Western Blot detection against Immunogen (37.84 KDa) .

## Specification

<b>Product Description</b>	Mouse monoclonal antibody raised against a partial recombinant SOX30.
<b>Immunogen</b>	SOX30 (NP_848511, 644 a.a. ~ 753 a.a) partial recombinant protein with GST tag. MW of the GST tag alone is 26 KDa.
<b>Sequence</b>	SMPECLSYEDRYPKHEGIFSTLNRDYSFRDYSSECTHSENSRSCENMNGTSYNSHSHSGEENL NPVPQLDIGTLENVFTAPTSTPSSIQQVNVTDSEEEEEKVLRLD
<b>Host</b>	Mouse
<b>Reactivity</b>	Human

Interspecies Antigen Sequence	Mouse (75)
Isotype	IgG2a Kappa
Quality Control Testing	Antibody Reactive Against Recombinant Protein. Western Blot detection against Immunogen (37.84 KDa) .
Storage Buffer	In 1x PBS, pH 7.4
Storage Instruction	Store at -20°C or lower. Aliquot to avoid repeated freezing and thawing.

## Applications

- Western Blot (Recombinant protein)

[Protocol Download](#)

- Sandwich ELISA (Recombinant protein)

Detection limit for recombinant GST tagged SOX30 is approximately 1ng/ml as a capture antibody.

[Protocol Download](#)

- ELISA

## Gene Info — SOX30

Entrez GeneID	<a href="#">11063</a>
GeneBank Accession#	<a href="#">NM_178424</a>
Protein Accession#	<a href="#">NP_848511</a>
Gene Name	SOX30
Gene Alias	-
Gene Description	SRY (sex determining region Y)-box 30
Omim ID	<a href="#">606698</a>
Gene Ontology	<a href="#">Hyperlink</a>

**Gene Summary**

This gene encodes a member of the SOX (SRY-related HMG-box) family of transcription factors involved in the regulation of embryonic development and in the determination of the cell fate. The encoded protein may act as a transcriptional regulator after forming a protein complex with other proteins. The protein may be involved in the differentiation of developing male germ cells. Two transcript variants encoding distinct isoforms have been identified for this gene. [provided by RefSeq]

**Other Designations**

Sox30 protein type II