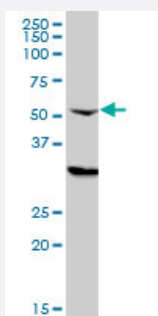


# CPSF6 monoclonal antibody (M10), clone 3F11

Catalog # H00011052-M10

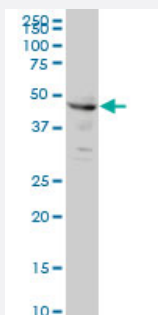
Size 100 ug

## Applications



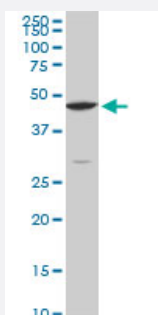
### Western Blot (Cell lysate)

CPSF6 monoclonal antibody (M10), clone 3F11. Western Blot analysis of CPSF6 expression in HL-60 ( Cat # L014V1 ).



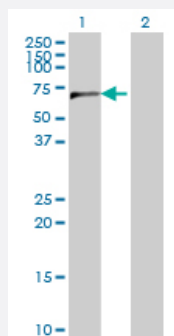
### Western Blot (Cell lysate)

CPSF6 monoclonal antibody (M10), clone 3F11 Western Blot analysis of CPSF6 expression in HeLa ( Cat # L013V1 ).



### Western Blot (Cell lysate)

CPSF6 monoclonal antibody (M10), clone 3F11. Western Blot analysis of CPSF6 expression in Raw 264.7(Cat # L024V1 ).



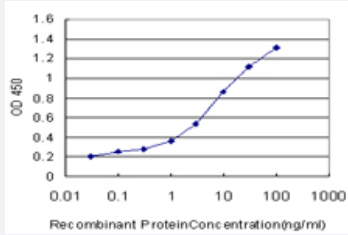
### Western Blot (Transfected lysate)

Western Blot analysis of CPSF6 expression in transfected 293T cell line by CPSF6 monoclonal antibody (M10), clone 3F11.

Lane 1: CPSF6 transfected lysate(59.21 KDa).

Lane 2: Non-transfected lysate.

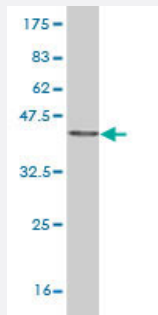
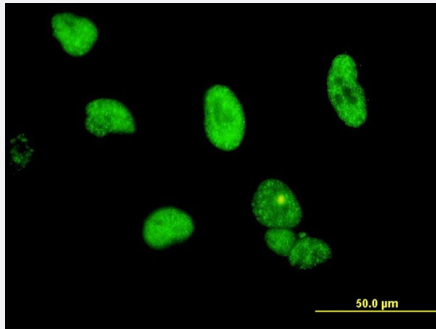
## Sandwich ELISA (Recombinant protein)



Detection limit for recombinant GST tagged CPSF6 is approximately 0.03ng/ml as a capture antibody.

## Immunofluorescence

Immunofluorescence of monoclonal antibody to CPSF6 on HeLa cell. [antibody concentration 10 ug/ml]



Western Blot detection against Immunogen (36.74 KDa) .

## Specification

<b>Product Description</b>	Mouse monoclonal antibody raised against a partial recombinant CPSF6.
<b>Immunogen</b>	CPSF6 (NP_008938, 37 a.a. ~ 136 a.a) partial recombinant protein with GST tag. MW of the GST tag alone is 26 KDa.
<b>Sequence</b>	ISPSANNGDAPEDRDYMDLPTVGDDVGKGAAPNVVYTYTGKRIALYIGNLTWWTTDEDL TEAV HSLGVNDILEIKFFENRANGQSKGFALVGVGSEAS
<b>Host</b>	Mouse
<b>Reactivity</b>	Human, Mouse
<b>Interspecies Antigen Sequence</b>	Mouse (93); Rat (93)
<b>Isotype</b>	IgG2a Kappa

**Quality Control Testing**

Antibody Reactive Against Recombinant Protein.  
Western Blot detection against Immunogen (36.74 KDa) .

**Storage Buffer**

In 1x PBS, pH 7.4

**Storage Instruction**

Store at -20°C or lower. Aliquot to avoid repeated freezing and thawing.

## Applications

- Western Blot (Cell lysate)

CPSF6 monoclonal antibody (M10), clone 3F11. Western Blot analysis of CPSF6 expression in HL-60 ( Cat # L014V1 ).

[Protocol Download](#)

- Western Blot (Cell lysate)

CPSF6 monoclonal antibody (M10), clone 3F11 Western Blot analysis of CPSF6 expression in HeLa ( Cat # L013V1 ).

[Protocol Download](#)

- Western Blot (Cell lysate)

CPSF6 monoclonal antibody (M10), clone 3F11. Western Blot analysis of CPSF6 expression in Raw 264.7(Cat # L024V1 ).

[Protocol Download](#)

- Western Blot (Transfected lysate)

Western Blot analysis of CPSF6 expression in transfected 293T cell line by CPSF6 monoclonal antibody (M10), clone 3F11.

Lane 1: CPSF6 transfected lysate(59.21 KDa).

Lane 2: Non-transfected lysate.

[Protocol Download](#)

- Western Blot (Recombinant protein)

[Protocol Download](#)

- Sandwich ELISA (Recombinant protein)

Detection limit for recombinant GST tagged CPSF6 is approximately 0.03ng/ml as a capture antibody.

[Protocol Download](#)

- ELISA

- Immunofluorescence

Immunofluorescence of monoclonal antibody to CPSF6 on HeLa cell. [antibody concentration 10 ug/ml]

## Gene Info — CPSF6

Entrez GeneID [11052](#)

GeneBank Accession# [NM\\_007007](#)

Protein Accession# [NP\\_008938](#)

Gene Name CPSF6

Gene Alias CFIM, CFIM68, HPBRIL-4, HPBRIL-7

Gene Description cleavage and polyadenylation specific factor 6, 68kDa

Omim ID [604979](#)

Gene Ontology [Hyperlink](#)

**Gene Summary** The protein encoded by this gene is one subunit of a cleavage factor required for 3' RNA cleavage and polyadenylation processing. The interaction of the protein with the RNA is one of the earliest steps in the assembly of the 3' end processing complex and facilitates the recruitment of other processing factors. The cleavage factor complex is composed of four polypeptides. This gene encodes the 68kD subunit. It has a domain organization reminiscent of spliceosomal proteins. [provided by RefSeq]

**Other Designations** cleavage and polyadenylation specific factor 6, 68 kD subunit|cleavage and polyadenylation specific factor 6, 68kD subunit|pre-mRNA cleavage factor I, 68kD subunit|pre-mRNA cleavage factor I m (68kD)

## Publication Reference

- [Evidence that cleavage factor Im is a heterotetrameric protein complex controlling alternative polyadenylation.](#)

Kim S, Yamamoto J, Chen Y, Aida M, Wada T, Handa H, Yamaguchi Y.

Genes to Cells 2010 Sep; 15(9):1003.

Application: WB-Tr, Human, HeLa cells

- [Novel snail1 target proteins in human colon cancer identified by proteomic analysis.](#)

Larriba MJ, Casado-Vela J, Pendas-Franco N, Pena R, Garcia de Herreros A, Berciano MT, Lafarga M, Casal JI, Munoz A.  
PLoS One 2010 Apr; 5(4):e10221.

Application: WB, Human, SW480-ADH cells