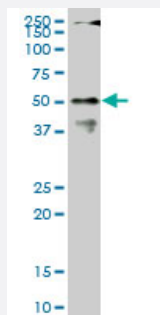


CPSF6 monoclonal antibody (M07), clone 1C5

Catalog # H00011052-M07

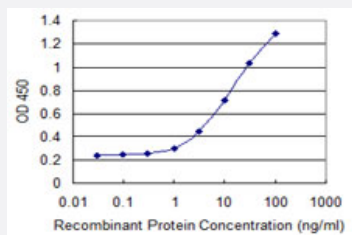
Size 100 ug

Applications



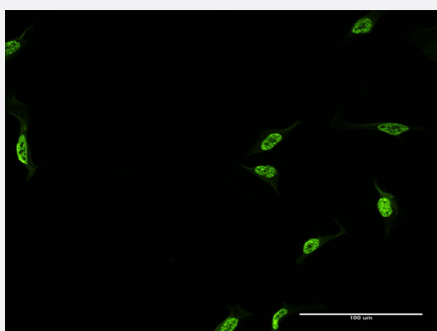
Western Blot (Cell lysate)

CPSF6 monoclonal antibody (M07), clone 1C5. Western Blot analysis of CPSF6 expression in NIH/3T3 (Cat # L018V1).



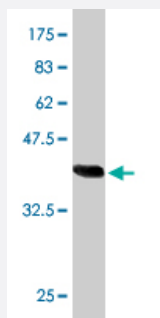
Sandwich ELISA (Recombinant protein)

Detection limit for recombinant GST tagged CPSF6 is 0.3 ng/ml as a capture antibody.



Immunofluorescence

Immunofluorescence of monoclonal antibody to CPSF6 on HeLa cell . [antibody concentration 10 ug/ml]



Western Blot detection against Immunogen (36.74 KDa) .

Specification

Product Description	Mouse monoclonal antibody raised against a partial recombinant CPSF6.
Immunogen	CPSF6 (NP_008938, 37 a.a. ~ 136 a.a) partial recombinant protein with GST tag. MW of the GST tag alone is 26 KDa.
Sequence	ISPSANNGDAPEDRDYMDLTPPTVGDDVGKGAAPNVVYTYTGKRIALYIGNLTWWTTDEDL TEAV HSLGVNDILEIKFFENRANGQSKGFALVGVGSEAS
Host	Mouse
Reactivity	Human, Mouse
Interspecies Antigen Sequence	Mouse (93); Rat (93)
Isotype	IgG2b Kappa
Quality Control Testing	Antibody Reactive Against Recombinant Protein. Western Blot detection against Immunogen (36.74 KDa) .
Storage Buffer	In 1x PBS, pH 7.4
Storage Instruction	Store at -20°C or lower. Aliquot to avoid repeated freezing and thawing.

Applications

- Western Blot (Cell lysate)

CPSF6 monoclonal antibody (M07), clone 1C5. Western Blot analysis of CPSF6 expression in NIH/3T3 (Cat # L018V1).

[Protocol Download](#)

- Western Blot (Recombinant protein)

[Protocol Download](#)

- Sandwich ELISA (Recombinant protein)

Detection limit for recombinant GST tagged CPSF6 is 0.3 ng/ml as a capture antibody.

[Protocol Download](#)

- ELISA

- Immunofluorescence

Immunofluorescence of monoclonal antibody to CPSF6 on HeLa cell . [antibody concentration 10 ug/ml]

Gene Info — CPSF6

Entrez GeneID [11052](#)

GeneBank Accession# [NM_007007](#)

Protein Accession# [NP_008938](#)

Gene Name CPSF6

Gene Alias CFIM, CFIM68, HPBRIL-4, HPBRIL-7

Gene Description cleavage and polyadenylation specific factor 6, 68kDa

Omim ID [604979](#)

Gene Ontology [Hyperlink](#)

Gene Summary The protein encoded by this gene is one subunit of a cleavage factor required for 3' RNA cleavage and polyadenylation processing. The interaction of the protein with the RNA is one of the earliest steps in the assembly of the 3' end processing complex and facilitates the recruitment of other processing factors. The cleavage factor complex is composed of four polypeptides. This gene encodes the 68kD subunit. It has a domain organization reminiscent of spliceosomal proteins. [provided by RefSeq]

Other Designations cleavage and polyadenylation specific factor 6, 68 kD subunit|cleavage and polyadenylation specific factor 6, 68kD subunit|pre-mRNA cleavage factor I, 68kD subunit|pre-mRNA cleavage factor I m (68kD)