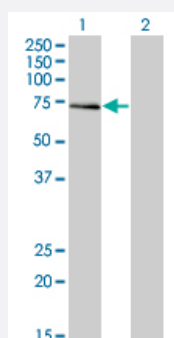


ALF monoclonal antibody (M05), clone 3E4

Catalog # H00011036-M05

Size 100 ug

Applications

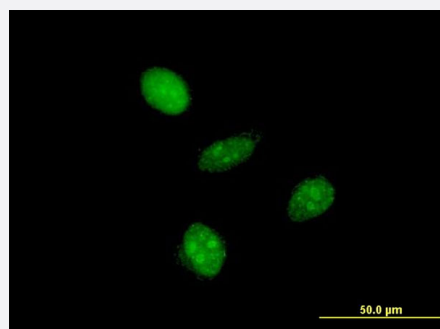


Western Blot (Transfected lysate)

Western Blot analysis of ALF expression in transfected 293T cell line by ALF monoclonal antibody (M05), clone 3E4.

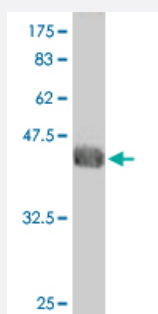
Lane 1: ALF transfected lysate(52.4 KDa).

Lane 2: Non-transfected lysate.



Immunofluorescence

Immunofluorescence of monoclonal antibody to GTF2A1L on HeLa cell .
[antibody concentration 10 ug/ml]



Western Blot detection against Immunogen (36.52 KDa) .

Specification

Product Description

Mouse monoclonal antibody raised against a partial recombinant ALF.

Immunogen	ALF (NP_006863, 251 a.a. ~ 348 a.a) partial recombinant protein with GST tag. MW of the GST tag alone is 26 KDa.
Sequence	PQVSQTNSNVESVLSGSASMAQNLHDESLSTSPHGALHQHVTDIQLHLKNRMYGCDSVKQPRNI EEPSNIPVSEKDSNSQVDLSIRVTDDDIGEIIQ
Host	Mouse
Reactivity	Human
Interspecies Antigen Sequence	Mouse (71); Rat (73)
Isotype	IgG2b Kappa
Quality Control Testing	Antibody Reactive Against Recombinant Protein. Western Blot detection against Immunogen (36.52 KDa) .
Storage Buffer	In 1x PBS, pH 7.4
Storage Instruction	Store at -20°C or lower. Aliquot to avoid repeated freezing and thawing.

Applications

- Western Blot (Transfected lysate)

Western Blot analysis of ALF expression in transfected 293T cell line by ALF monoclonal antibody (M05), clone 3E4.

Lane 1: ALF transfected lysate(52.4 KDa).

Lane 2: Non-transfected lysate.

[Protocol Download](#)

- Western Blot (Recombinant protein)

[Protocol Download](#)

- ELISA

- Immunofluorescence

Immunofluorescence of monoclonal antibody to GTF2A1L on HeLa cell . [antibody concentration 10 ug/ml]

Gene Info — GTF2A1L

Entrez GeneID [11036](#)

GeneBank Accession#	NM_006872
Protein Accession#	NP_006863
Gene Name	GTF2A1L
Gene Alias	ALF, MGC26254
Gene Description	general transcription factor IIA, 1-like
Omim ID	605358
Gene Ontology	Hyperlink
Gene Summary	<p>The assembly and stability of the RNA polymerase II transcription pre-initiation complex on a eukaryotic core promoter involve the effects of TFIIA on the interaction between TATA-binding protein (TBP) and DNA. This gene encodes a germ cell-specific counterpart of the large (alpha/beta) subunit of general transcription factor TFIIA that is able to stabilize the binding of TBP to DNA and may be uniquely important to testis biology. Alternative splicing for this locus has been observed and two variants, encoding distinct isoforms, have been identified. Co-transcription of this gene and the neighboring upstream gene generates a rare transcript (SALF), which encodes a fusion protein comprised of sequence sharing identity with each individual gene product. [provided by RefSeq]</p>
Other Designations	GTF2A1-like factor TFIIA alpha/beta like factor TFIIA large subunit isoform ALF TFIIA-alpha/beta-like factor

Pathway

- [Basal transcription factors](#)

Disease

- [Tobacco Use Disorder](#)