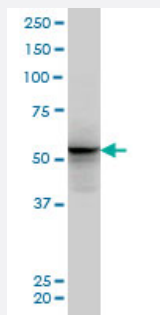


# ALF monoclonal antibody (M04), clone 5B9

Catalog # H00011036-M04

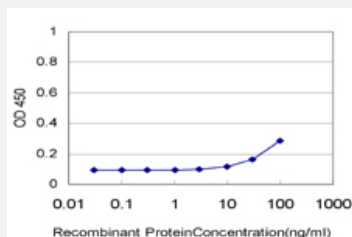
Size 100 ug

## Applications



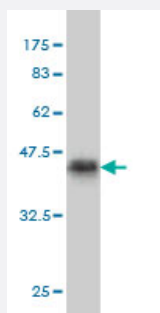
### Western Blot (Cell lysate)

ALF monoclonal antibody (M04), clone 5B9 Western Blot analysis of ALF expression in PC-12 ( Cat # L012V1 ).



### Sandwich ELISA (Recombinant protein)

Detection limit for recombinant GST tagged ALF is approximately 10ng/ml as a capture antibody.



Western Blot detection against Immunogen (36.52 KDa) .

## Specification

### Product Description

Mouse monoclonal antibody raised against a partial recombinant ALF.

<b>Immunogen</b>	ALF (NP_006863, 251 a.a. ~ 348 a.a) partial recombinant protein with GST tag. MW of the GST tag alone is 26 KDa.
<b>Sequence</b>	PQVSQTNSNVESVLSGSASMAQNLHDESLSTSPHGALHQHVTDIQLHILKNRMYGCDSVKQPRNI EEPSNIPVSEKDSNSQVDLSIRVTDDDIGEIIQ
<b>Host</b>	Mouse
<b>Reactivity</b>	Human, Rat
<b>Interspecies Antigen Sequence</b>	Mouse (71); Rat (73)
<b>Isotype</b>	IgG2b Kappa
<b>Quality Control Testing</b>	Antibody Reactive Against Recombinant Protein. Western Blot detection against Immunogen (36.52 KDa) .
<b>Storage Buffer</b>	In 1x PBS, pH 7.4
<b>Storage Instruction</b>	Store at -20°C or lower. Aliquot to avoid repeated freezing and thawing.

## Applications

- Western Blot (Cell lysate)

ALF monoclonal antibody (M04), clone 5B9 Western Blot analysis of ALF expression in PC-12 ( Cat # L012V1 ).

[Protocol Download](#)

- Western Blot (Recombinant protein)

[Protocol Download](#)

- Sandwich ELISA (Recombinant protein)

Detection limit for recombinant GST tagged ALF is approximately 10ng/ml as a capture antibody.

[Protocol Download](#)

- ELISA

## Gene Info — GTF2A1L

Entrez GeneID [11036](#)

GeneBank Accession#	<a href="#">NM_006872</a>
Protein Accession#	<a href="#">NP_006863</a>
Gene Name	GTF2A1L
Gene Alias	ALF, MGC26254
Gene Description	general transcription factor IIA, 1-like
Omim ID	<a href="#">605358</a>
Gene Ontology	<a href="#">Hyperlink</a>
Gene Summary	<p>The assembly and stability of the RNA polymerase II transcription pre-initiation complex on a eukaryotic core promoter involve the effects of TFIIA on the interaction between TATA-binding protein (TBP) and DNA. This gene encodes a germ cell-specific counterpart of the large (alpha/beta) subunit of general transcription factor TFIIA that is able to stabilize the binding of TBP to DNA and may be uniquely important to testis biology. Alternative splicing for this locus has been observed and two variants, encoding distinct isoforms, have been identified. Co-transcription of this gene and the neighboring upstream gene generates a rare transcript (SALF), which encodes a fusion protein comprised of sequence sharing identity with each individual gene product. [provided by RefSeq]</p>
Other Designations	GTF2A1-like factor TFIIA alpha/beta like factor TFIIA large subunit isoform ALF TFIIA-alpha/beta-like factor

## Pathway

- [Basal transcription factors](#)

## Disease

- [Tobacco Use Disorder](#)