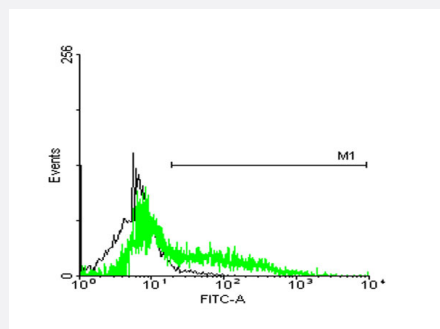


# STIP1 monoclonal antibody (M35), clone 2E11

Catalog # H00010963-M35

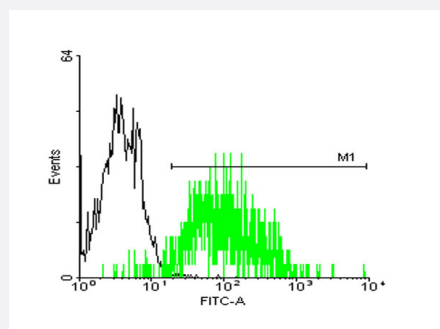
Size 100 ug

## Applications



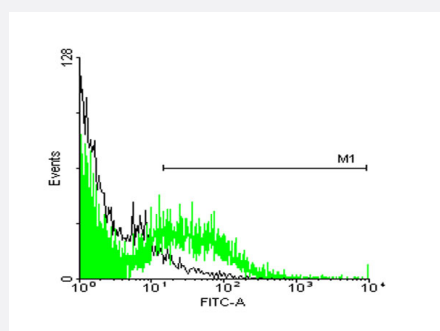
### Flow Cytometry

FACS analysis of HeLa cells stained with STIP1 monoclonal antibody clone 2E11 (Green) and non-stained HeLa cells (Black) as negative control.



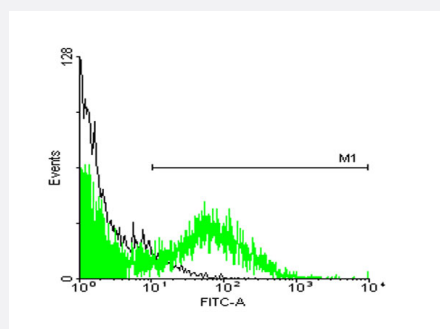
### Flow Cytometry

FACS analysis of A-431 cells stained with STIP1 monoclonal antibody clone 2E11 (Green) and non-stained A-431 cells (Black) as negative control.



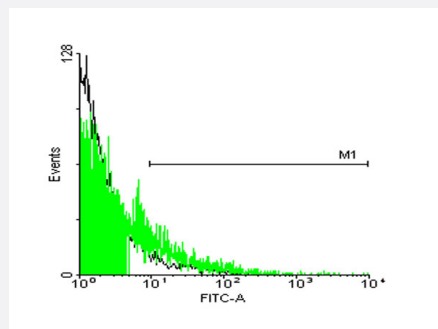
### Flow Cytometry

FACS analysis of TOV-21G cells stained with STIP1 monoclonal antibody clone 2E11 (Green) and non-stained TOV-21G cells (Black) as negative control.



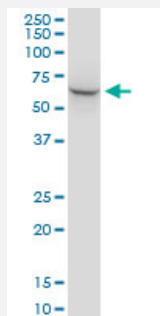
### Flow Cytometry

FACS analysis of ES-2 cells stained with STIP1 monoclonal antibody clone 2E11 (Green) and non-stained ES-2 cells (Black) as negative control.



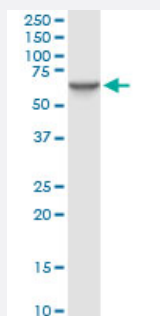
## Flow Cytometry

FACS analysis of 293 cells stained with STIP1 monoclonal antibody clone 2E11 (Green) and non-stained 293 cells (Black) as negative control.



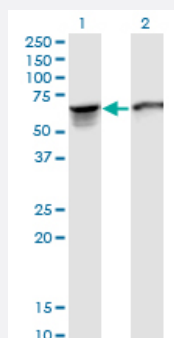
## Western Blot (Tissue lysate)

STIP1 monoclonal antibody (M35), clone 2E11. Western Blot analysis of STIP1 expression in human ovarian cancer.



## Western Blot (Cell lysate)

STIP1 monoclonal antibody (M35), clone 2E11. Western Blot analysis of STIP1 expression in MCF-7.

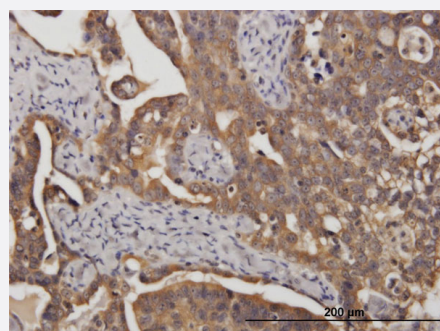


## Western Blot (Transfected lysate)

Western Blot analysis of STIP1 expression in transfected 293T cell line by STIP1 monoclonal antibody (M35), clone 2E11.

Lane 1: STIP1 transfected lysate (Predicted MW: 62.6 KDa).

Lane 2: Non-transfected lysate.

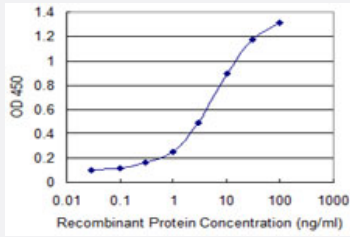


## Immunohistochemistry (Formalin/PFA-fixed paraffin-embedded sections)

Immunoperoxidase of monoclonal antibody to STIP1 on formalin-fixed paraffin-embedded human ovarian cancer. [antibody concentration 0.75 ug/ml]

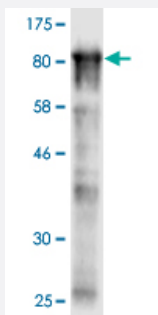
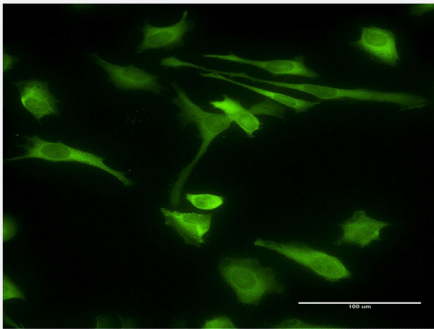
## Sandwich ELISA (Recombinant protein)

Detection limit for recombinant GST tagged STIP1 is 0.1 ng/ml as a capture antibody.



## Immunofluorescence

Immunofluorescence of monoclonal antibody to STIP1 on HeLa cell . [antibody concentration 10 ug/ml]



Western Blot detection against Immunogen (85.25 KDa) .

## Specification

### Product Description

Mouse monoclonal antibody raised against a full-length recombinant STIP1.

### Immunogen

STIP1 (AAH02987.1, 1 a.a. ~ 543 a.a) full-length recombinant protein with GST tag. MW of the GST tag alone is 26 KDa.

### Sequence

MEQVNELKEKGNKALSVGNIDDALQCYSEAIKLDPHNHVLYSNRSAAYAKKGDYQKAYEDGCKT  
VDLKPDPWGKGYSRKAALFLNRFEEAKRTYEEGLKHEANNPQLKEGLQNMEARLAERKFMNP  
FNMPNLYQKLESDPRTRTLLSDPTYRELIEQLRNKPSDLGTLQDPRIMTTLVLLGVDLGSMDEE  
EEIATPPPPPPPKKETKPEPMEEDLPENKKQALKEKELGNDAYKKKDFDTALKHYDKAKELDPT  
NMTYITNQAAYFEKGDYNKCRELCEKAIEVGRENREDYRQIAKAYARIGNSYFKEEKYKDAIHFN  
KSLAEHRTPDVLKKCQQAELKEQERLAYINPDALEEKNKGNECFQKGDYPQAMKHYTEAIKR  
NPKDAKLYSNRAACYTKLLEFQLALKDCEECIQLEPTFIKGYTRKAAALEAMKDYTKAMDVYQKAL  
DLDSCKEAADGYQRCMMAQYNRHDSPEDVKRRAMADPEVQQIMSDPAMRLILEQMOKDPQA  
LSEHLKNPVIAQKIQLMDVGLAIR

### Host

Mouse

<b>Reactivity</b>	Human
<b>Interspecies Antigen Sequence</b>	Mouse (97); Rat (97)
<b>Isotype</b>	IgG1 Kappa
<b>Quality Control Testing</b>	Antibody Reactive Against Recombinant Protein. Western Blot detection against Immunogen (85.25 KDa) .
<b>Storage Buffer</b>	In 1x PBS, pH 7.4
<b>Storage Instruction</b>	Store at -20°C or lower. Aliquot to avoid repeated freezing and thawing.

## Applications

- Flow Cytometry

FACS analysis of HeLa cells stained with STIP1 monoclonal antibody clone 2E11 (Green) and non-stained HeLa cells (Black) as negative control.

- Flow Cytometry

FACS analysis of A-431 cells stained with STIP1 monoclonal antibody clone 2E11 (Green) and non-stained A-431 cells (Black) as negative control.

- Flow Cytometry

FACS analysis of TOV-21G cells stained with STIP1 monoclonal antibody clone 2E11 (Green) and non-stained TOV-21G cells (Black) as negative control.

- Flow Cytometry

FACS analysis of ES-2 cells stained with STIP1 monoclonal antibody clone 2E11 (Green) and non-stained ES-2 cells (Black) as negative control.

- Flow Cytometry

FACS analysis of 293 cells stained with STIP1 monoclonal antibody clone 2E11 (Green) and non-stained 293 cells (Black) as negative control.

- Western Blot (Tissue lysate)

STIP1 monoclonal antibody (M35), clone 2E11. Western Blot analysis of STIP1 expression in human ovarian cancer.

[Protocol Download](#)

- Western Blot (Cell lysate)

STIP1 monoclonal antibody (M35), clone 2E11. Western Blot analysis of STIP1 expression in MCF-7.

[Protocol Download](#)

- Western Blot (Transfected lysate)

Western Blot analysis of STIP1 expression in transfected 293T cell line by STIP1 monoclonal antibody (M35), clone 2E11.

Lane 1: STIP1 transfected lysate (Predicted MW: 62.6 KDa).

Lane 2: Non-transfected lysate.

[Protocol Download](#)

- Western Blot (Recombinant protein)

[Protocol Download](#)

- Immunohistochemistry (Formalin/PFA-fixed paraffin-embedded sections)

Immunoperoxidase of monoclonal antibody to STIP1 on formalin-fixed paraffin-embedded human ovarian cancer. [antibody concentration 0.75 ug/ml]

[Protocol Download](#)

- Sandwich ELISA (Recombinant protein)

Detection limit for recombinant GST tagged STIP1 is 0.1 ng/ml as a capture antibody.

[Protocol Download](#)

- ELISA

- Immunofluorescence

Immunofluorescence of monoclonal antibody to STIP1 on HeLa cell . [antibody concentration 10 ug/ml]

## Gene Info — STIP1

Entrez GeneID	<a href="#">10963</a>
---------------	-----------------------

GeneBank Accession#	<a href="#">BC002987</a>
---------------------	--------------------------

Protein Accession#	<a href="#">AAH02987.1</a>
--------------------	----------------------------

Gene Name	STIP1
-----------	-------

Gene Alias	HOP, IEF-SSP-3521, P60, STI1, STI1L
------------	-------------------------------------

Gene Description	stress-induced-phosphoprotein 1
Omim ID	<a href="#">605063</a>
Gene Ontology	<a href="#">Hyperlink</a>
Gene Summary	STIP1 is an adaptor protein that coordinates the functions of HSP70 (see HSPA1A; MIM 140550) and HSP90 (see HSP90AA1; MIM 140571) in protein folding. It is thought to assist in the transfer of proteins from HSP70 to HSP90 by binding both HSP90 and substrate-bound HSP70. STIP1 also stimulates the ATPase activity of HSP70 and inhibits the ATPase activity of HSP90, suggesting that it regulates both the conformations and ATPase cycles of these chaperones (Song and Ma sison, 2005 [PubMed 16100115]).[supplied by OMIM]
Other Designations	Hsp70/Hsp90-organizing protein stress-induced-phosphoprotein 1 (Hsp70/Hsp90-organizing protein)

## Publication Reference

- [Positive associations between upregulated levels of stress-induced phosphoprotein 1 and matrix metalloproteinase-9 in endometriosis/adenomyosis.](#)

Wang HS, Tsai CL, Chang PY, Chao A, Wu RC, Chen SH, Wang CJ, Yen CF, Lee YS, Wang TH.

PLoS One 2018 Jan; 13(1):e0190573.

Application: Cap Ab, ChIP, ELISA, IHC-P, Human, ARK2 cells, Ovarian endometriosis, Serum, Uterine adenomyosis

- [Immunohistological analysis of stress-induced phosphoprotein 1 in ovarian cancer patients with low serum cancer antigen 125 levels.](#)

Chao A, Lee LY, Hsueh C, Lin CY, Tsai CL, Chao AS, Lin CT, Chou HH, Chang TC, Wang TH.

Taiwanese Journal of Obstetrics & Gynecology 2013 Jun; 52(2):185.

Application: IHC-P, Human, Ovarian cancer

- [Tumor Stress-Induced Phosphoprotein1 \(STIP1\) as a Prognostic Biomarker in Ovarian Cancer.](#)

Chao A, Lai CH, Tsai CL, Hsueh S, Hsueh C, Lin CY, Chou HH, Lin YJ, Chen HW, Chang TC, Wang TH.

PLoS One. 2013 Feb; 8(2):e57084.

Application: IHC, Human, Human ovarian tissues

- [Stress-induced phosphoprotein 1 as a secreted biomarker for human ovarian cancer promotes cancer cell proliferation.](#)

Wang TH, Chao A, Tsai CL, Chang CL, Chen SH, Lee YS, Chen JK, Lin YJ, Chang PY, Wang CJ, Chao AS, Chang SD, Chang TC, Lai CH, Wang HS.

Molecular & Cellular Proteomics 2010 Sep; 9(9):1873.

Application: ELISA, Human, Serum

## Pathway

- [Prion diseases](#)

## Disease

- [Asthma](#)
- [Breast cancer](#)
- [Breast Neoplasms](#)
- [Genetic Predisposition to Disease](#)
- [Ovarian cancer](#)