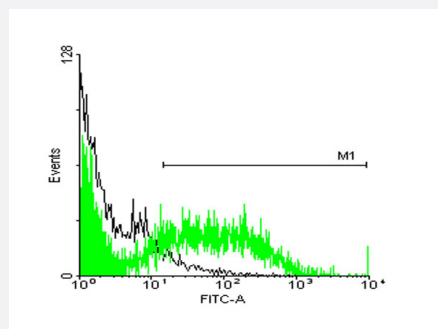


STIP1 monoclonal antibody (M33), clone 2E1

Catalog # H00010963-M33

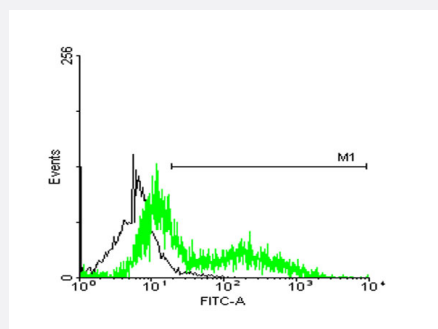
Size 100 ug

Applications



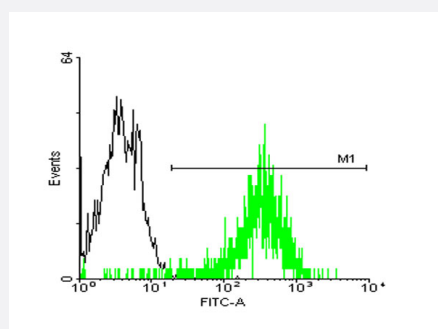
Flow Cytometry

FACS analysis of TOV-21G cells stained with STIP1 monoclonal antibody clone 2E1 (Green) and non-stained TOV-21G cells (Black) as negative control.



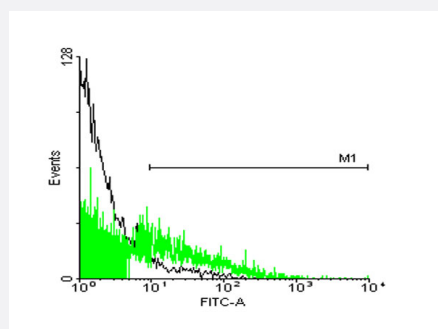
Flow Cytometry

FACS analysis of HeLa cells stained with STIP1 monoclonal antibody clone 2E1 (Green) and non-stained HeLa cells (Black) as negative control.



Flow Cytometry

FACS analysis of A-431 cells stained with STIP1 monoclonal antibody clone 2E1 (Green) and non-stained A-431 cells (Black) as negative control.

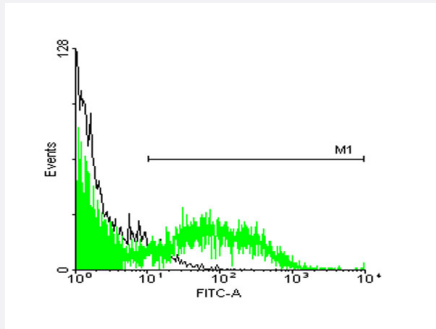


Flow Cytometry

FACS analysis of 293 cells stained with STIP1 monoclonal antibody clone 2E1 (Green) and non-stained 293 cells (Black) as negative control.

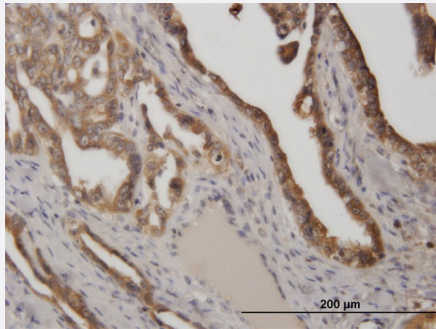
Flow Cytometry

FACS analysis of ES-2 cells stained with STIP1 monoclonal antibody clone 2E1 (Green) and non-stained ES-2 cells (Black) as negative control.



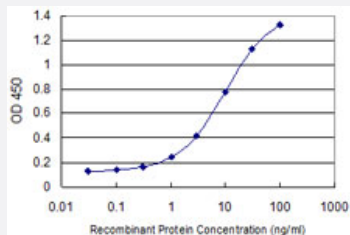
Immunohistochemistry (Formalin/PFA-fixed paraffin-embedded sections)

Immunoperoxidase of monoclonal antibody to STIP1 on formalin-fixed paraffin-embedded human ovarian cancer. [antibody concentration 0.75 ug/ml]



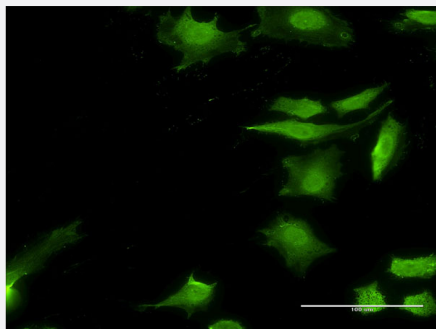
Sandwich ELISA (Recombinant protein)

Detection limit for recombinant GST tagged STIP1 is 0.1 ng/ml as a capture antibody.

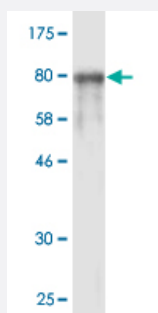


Immunofluorescence

Immunofluorescence of monoclonal antibody to STIP1 on HeLa cell . [antibody concentration 10 ug/ml]



Western Blot detection against Immunogen (85.25 KDa) .



Specification

Product Description	Mouse monoclonal antibody raised against a full-length recombinant STIP1.
Immunogen	STIP1 (AAH02987.1, 1 a.a. ~ 543 a.a) full-length recombinant protein with GST tag. MW of the GST tag alone is 26 KDa.
Sequence	MEQVNELKEKGNKALSVGNIDDALQCYSEAIKLDPHNHVLYSNRSAA YAKKGDYQKAYEDGCKT VDLKP DWKGYSRKAAALEFLNRFEEAKRTYEEGLKHEANNPQLKEGLQNMEARLAERKFMNP FNMPNLYQKLESDPRTRTLSDPTYRELIEQLRNKPSDLGTLQDPRIMTTL SVLLGVDLGSMDEE EEIATPPPPPPPKKETKPEPMEEDLPENKKQALKEKELGNDAYKKKDFDTALKHYDKAKELDPT NMTYITNQAAVYFEKGDYNKCRELCEKAIEVGRENREDYRQIAKAYARIGNSYFKEEKYKDAIHFN KSLAEHRTPDVLKKCQQA EKILKEQERLAYINPDAL EEKNKGNECFQKGDYPQAMKHYTEAIKR NPKDAKLYSNRAACYTKLLEFQLALKDCEEIQLEPTFIKGYTRKAAALEAMKDYTKAMDVYQKAL DLDSSCKEAADGYQRCMMAQYNRHDSPEDVKRRAMADPEVQQIMSDPAMRLILEQM QKDPQA LSEHLKNPVIAQKIQKLMDVGLAIR
Host	Mouse
Reactivity	Human
Interspecies Antigen Sequence	Mouse (97); Rat (97)
Isotype	IgG1 Kappa
Quality Control Testing	Antibody Reactive Against Recombinant Protein. Western Blot detection against Immunogen (85.25 KDa) .
Storage Buffer	In 1x PBS, pH 7.4
Storage Instruction	Store at -20°C or lower. Aliquot to avoid repeated freezing and thawing.

Applications

- Flow Cytometry

FACS analysis of TOV-21G cells stained with STIP1 monoclonal antibody clone 2E1 (Green) and non-stained TOV-21G cells (Black) as negative control.

- Flow Cytometry

FACS analysis of HeLa cells stained with STIP1 monoclonal antibody clone 2E1 (Green) and non-stained HeLa cells (Black) as negative control.

- Flow Cytometry

FACS analysis of A-431 cells stained with STIP1 monoclonal antibody clone 2E1 (Green) and non-stained A-431 cells (Black) as negative control.

- Flow Cytometry

FACS analysis of 293 cells stained with STIP1 monoclonal antibody clone 2E1 (Green) and non-stained 293 cells (Black) as negative control.

- Flow Cytometry

FACS analysis of ES-2 cells stained with STIP1 monoclonal antibody clone 2E1 (Green) and non-stained ES-2 cells (Black) as negative control.

- Western Blot (Recombinant protein)

[Protocol Download](#)

- Immunohistochemistry (Formalin/PFA-fixed paraffin-embedded sections)

Immunoperoxidase of monoclonal antibody to STIP1 on formalin-fixed paraffin-embedded human ovarian cancer. [antibody concentration 0.75 ug/ml]

[Protocol Download](#)

- Sandwich ELISA (Recombinant protein)

Detection limit for recombinant GST tagged STIP1 is 0.1 ng/ml as a capture antibody.

[Protocol Download](#)

- ELISA

- Immunofluorescence

Immunofluorescence of monoclonal antibody to STIP1 on HeLa cell . [antibody concentration 10 ug/ml]

Gene Info — STIP1

Entrez GeneID [10963](#)

GeneBank Accession# [BC002987](#)

Protein Accession# [AAH02987.1](#)

Gene Name STIP1

Gene Alias HOP, IEF-SSP-3521, P60, STI1, STI1L

Gene Description stress-induced-phosphoprotein 1

Omim ID [605063](#)

Gene Ontology

[Hyperlink](#)

Gene Summary

STIP1 is an adaptor protein that coordinates the functions of HSP70 (see HSPA1A; MIM 140550) and HSP90 (see HSP90AA1; MIM 140571) in protein folding. It is thought to assist in the transfer of proteins from HSP70 to HSP90 by binding both HSP90 and substrate-bound HSP70. STIP1 also stimulates the ATPase activity of HSP70 and inhibits the ATPase activity of HSP90, suggesting that it regulates both the conformations and ATPase cycles of these chaperones (Song and Ma sison, 2005 [PubMed 16100115]).[supplied by OMIM]

Other Designations

Hsp70/Hsp90-organizing protein|stress-induced-phosphoprotein 1 (Hsp70/Hsp90-organizing protein)

Publication Reference

- [Stress-induced phosphoprotein 1 as a secreted biomarker for human ovarian cancer promotes cancer cell proliferation.](#)

Wang TH, Chao A, Tsai CL, Chang CL, Chen SH, Lee YS, Chen JK, Lin YJ, Chang PY, Wang CJ, Chao AS, Chang SD, Chang TC, Lai CH, Wang HS.

Molecular & Cellular Proteomics 2010 Sep; 9(9):1873.

Application: ELISA, Human, Serum

Pathway

- [Prion diseases](#)

Disease

- [Asthma](#)
- [Breast cancer](#)
- [Breast Neoplasms](#)
- [Genetic Predisposition to Disease](#)
- [Ovarian cancer](#)