

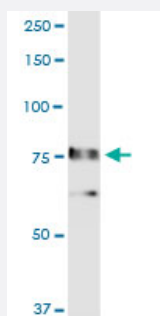
MaxPab®

RALBP1 purified MaxPab rabbit polyclonal antibody (D01P)

Catalog # H00010928-D01P

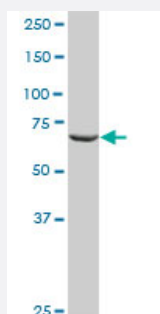
Size 100 ug

Applications



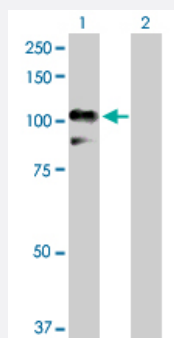
Western Blot (Tissue lysate)

RALBP1 MaxPab rabbit polyclonal antibody. Western Blot analysis of RALBP1 expression in rat brain.



Western Blot (Cell lysate)

RALBP1 MaxPab rabbit polyclonal antibody. Western Blot analysis of RALBP1 expression in HepG2.

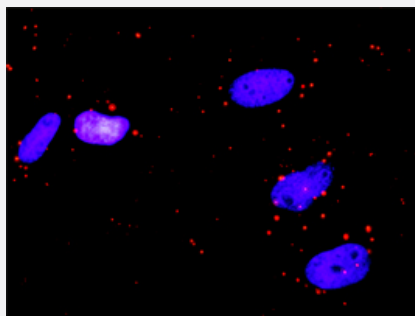


Western Blot (Transfected lysate)

Western Blot analysis of RALBP1 expression in transfected 293T cell line ([H00010928-T02](#)) by RALBP1 MaxPab polyclonal antibody.

Lane 1: RALBP1 transfected lysate(76.10 KDa).

Lane 2: Non-transfected lysate.



In situ Proximity Ligation Assay (Cell)

Proximity Ligation Analysis of protein-protein interactions between RALBP1 and IKBKG. HeLa cells were stained with anti-RALBP1 rabbit purified polyclonal 1:1200 and anti-IBKKG mouse monoclonal antibody 1:50. Each red dot represents the detection of protein-protein interaction complex, and nuclei were counterstained with DAPI (blue).

Specification

Product Description	Rabbit polyclonal antibody raised against a full-length human RALBP1 protein.
Immunogen	RALBP1 (NP_006779.1, 1 a.a. ~ 655 a.a) full-length human protein.
Sequence	MTECFLPPTSSPSEHRRVEHGSLTRTPSSEEISPTKFPGLYRTGEPSPPHDILHEPPDVVSDDE KDHGKKKGKFKKKEKRTEGYAAFQEDSSGDEAESPSKMKRSKGIHVFKKPSFSKKKEKDFKIKE KPKEEKHKKEKHKEEKHKESKDLTAADVVKQWKEKKKKKKPIQEPEVPQIDVPLKPIFGIPL ADAVERTMMYDGIRLPAVFRECIDYVEKYGMKCEGYRVSGIKSVDELKAAYDREESTNLEDYEP NTVASLLKQYLRDLPENLLTKELMPRFEEACGRTTETEKVQEFQRLKELPECNYLLISWLIVHMD HVIAKELETKMNIQNISVLSPTVQISNRVLYVFFTHVQELFGNVVLKQVMKPLRWSNMATMPTLPE TQAGIKEEIRRQEFLLNCLHRDLQGGIKDLSKEERLWEVQRILTALKRKLREAKRQECETKIAQEIAS LSKEDVSKEEMNENEEVINILLAQENEILTEQEELLAMEQFLRRQIASEKEEIERLRAEIAEIQSRQQ HGRSETEEYSSSESESESEDEEELQIILEDLQRQNEELEIKNNHLNQAIHEEREAIIELRVQLRLLQMQ RAKAEQQAQEDDEEPEWRGGAVQPPRDGVLEPKAAKEQPKAGKEPAKPSPSRDRKETS
Host	Rabbit
Reactivity	Human, Rat
Interspecies Antigen Sequence	Mouse (91); Rat (91)
Quality Control Testing	Antibody reactive against mammalian transfected lysate.
Storage Buffer	In 1x PBS, pH 7.4
Storage Instruction	Store at -20°C or lower. Aliquot to avoid repeated freezing and thawing.

Applications

- Western Blot (Tissue lysate)

RALBP1 MaxPab rabbit polyclonal antibody. Western Blot analysis of RALBP1 expression in rat brain.

[Protocol Download](#)

- Western Blot (Cell lysate)

RALBP1 MaxPab rabbit polyclonal antibody. Western Blot analysis of RALBP1 expression in HepG2.

[Protocol Download](#)

- Western Blot (Transfected lysate)

Western Blot analysis of RALBP1 expression in transfected 293T cell line ([H00010928-T02](#)) by RALBP1 MaxPab polyclonal antibody.

Lane 1: RALBP1 transfected lysate(76.10 KDa).

Lane 2: Non-transfected lysate.

[Protocol Download](#)

- In situ* Proximity Ligation Assay (Cell)

Proximity Ligation Analysis of protein-protein interactions between RALBP1 and IKBKG. HeLa cells were stained with anti-RALBP1 rabbit purified polyclonal 1:1200 and anti-ICKBKG mouse monoclonal antibody 1:50. Each red dot represents the detection of protein-protein interaction complex, and nuclei were counterstained with DAPI (blue).

Gene Info — RALBP1

Entrez GeneID [10928](#)

GeneBank Accession# [NM_006788](#)

Protein Accession# [NP_006779.1](#)

Gene Name RALBP1

Gene Alias RIP1, RLIP1, RLIP76

Gene Description ralA binding protein 1

Omim ID [605801](#)

Gene Ontology [Hyperlink](#)

Other Designations OTTHUMP00000162351|ral-interacting protein 1|ralA-binding protein 1

Pathway

- [Pancreatic cancer](#)
- [Pathways in cancer](#)

Disease

- [Epilepsy](#)