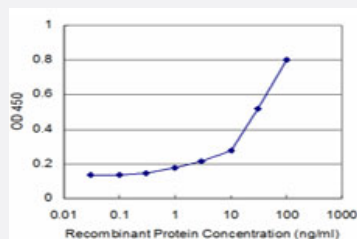


MAGED2 monoclonal antibody (M04), clone 6G10

Catalog # H00010916-M04

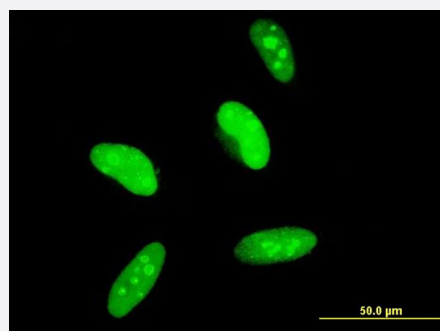
Size 100 ug

Applications



Sandwich ELISA (Recombinant protein)

Detection limit for recombinant GST tagged MAGED2 is approximately 1ng/ml as a capture antibody.



Immunofluorescence

Immunofluorescence of monoclonal antibody to MAGED2 on HeLa cell .
[antibody concentration 10 ug/ml]



Western Blot detection against Immunogen (37.84 KDa) .

Specification

Product Description

Mouse monoclonal antibody raised against a partial recombinant MAGED2.

Immunogen	MAGED2 (NP_055414, 16 a.a. ~ 125 a.a) partial recombinant protein with GST tag. MW of the GST tag alone is 26 KDa.
Sequence	AEASEKDSSSMQTLTQNVETPKASKALEVSEDVKVSKASGVSKATEVSKTPEAREA PATQASSTTQLTDTQVLAAENKSLAADTKKQNADPQAVTMPATETKK
Host	Mouse
Reactivity	Human
Interspecies Antigen Sequence	Mouse (86); Rat (86)
Isotype	IgG2a Kappa
Quality Control Testing	Antibody Reactive Against Recombinant Protein. Western Blot detection against Immunogen (37.84 KDa) .
Storage Buffer	In 1x PBS, pH 7.4
Storage Instruction	Store at -20°C or lower. Aliquot to avoid repeated freezing and thawing.

Applications

- Western Blot (Recombinant protein)

[Protocol Download](#)

- Sandwich ELISA (Recombinant protein)

Detection limit for recombinant GST tagged MAGED2 is approximately 1ng/ml as a capture antibody.

[Protocol Download](#)

- ELISA

- Immunofluorescence

Immunofluorescence of monoclonal antibody to MAGED2 on HeLa cell . [antibody concentration 10 ug/ml]

Gene Info — MAGED2

Entrez GeneID [10916](#)

GeneBank Accession# [NM_014599](#)

Protein Accession#	NP_055414
Gene Name	MAGED2
Gene Alias	11B6, BCG1, HCA10, JCL-1, MAGE-D2, MAGED, MGC8386
Gene Description	melanoma antigen family D, 2
Omim ID	300470
Gene Ontology	Hyperlink
Gene Summary	<p>This gene is a member of the MAGED gene family. While the MAGEA and MAGEB genes are silent in normal tissues with the exception of testis and placenta, the MAGED genes are expressed ubiquitously. The MAGED genes are clustered on chromosome Xp11. This gene is located in Xp11.2, a hot spot for X-linked mental retardation (XLMR). Multiple alternatively spliced transcript variants have been found for this gene, however, the full length nature of some variants has not been defined. [provided by RefSeq]</p>
Other Designations	OTTHUMP00000023381 OTTHUMP00000023382 breast cancer associated gene 1 hepatocellular carcinoma associated protein hepatocellular carcinoma-associated protein HCA10 melanoma-associated antigen D2

Disease

- [Breast cancer](#)
- [Breast Neoplasms](#)
- [Genetic Predisposition to Disease](#)
- [Ovarian cancer](#)