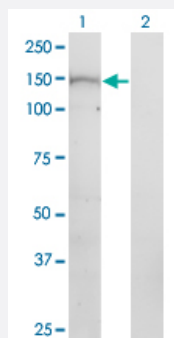


NTE monoclonal antibody (M08), clone 3D10

Catalog # H00010908-M08

Size 100 ug

Applications

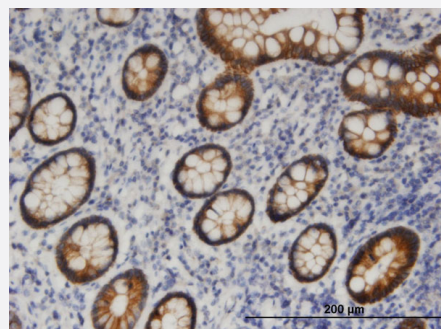


Western Blot (Transfected lysate)

Western Blot analysis of PNPLA6 expression in transfected 293T cell line by NTE monoclonal antibody (M08), clone 3D10.

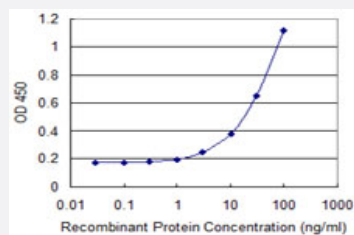
Lane 1: PNPLA6 transfected lysate (Predicted MW: 146.2 KDa).

Lane 2: Non-transfected lysate.



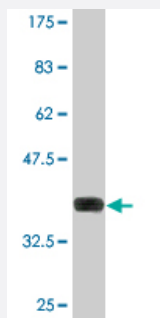
Immunohistochemistry (Formalin/PFA-fixed paraffin-embedded sections)

Immunoperoxidase of monoclonal antibody to PNPLA6 on formalin-fixed paraffin-embedded human small Intestine. [antibody concentration 3 ug/ml]



Sandwich ELISA (Recombinant protein)

Detection limit for recombinant GST tagged PNPLA6 is 1 ng/ml as a capture antibody.



Western Blot detection against Immunogen (36.63 KDa) .

Specification

Product Description	Mouse monoclonal antibody raised against a partial recombinant NTE.
Immunogen	NTE (NP_006693.2, 1229 a.a. ~ 1327 a.a) partial recombinant protein with GST tag. MW of the GST tag alone is 26 KDa.
Sequence	ESRRADVLAFSSGFTDLAEMVSRIEPTSYVSDGCADGEESDCLTEYEEDAGPDCSRDEGGSP EGASPSTASEMEEEEKSILRQRRCLPQEPPGSATDA
Host	Mouse
Reactivity	Human
Interspecies Antigen Sequence	Mouse (95)
Isotype	IgG2a Kappa
Quality Control Testing	Antibody Reactive Against Recombinant Protein. Western Blot detection against Immunogen (36.63 KDa) .
Storage Buffer	In 1x PBS, pH 7.4
Storage Instruction	Store at -20°C or lower. Aliquot to avoid repeated freezing and thawing.

Applications

● Western Blot (Transfected lysate)

Western Blot analysis of PNPLA6 expression in transfected 293T cell line by NTE monoclonal antibody (M08), clone 3D10.

Lane 1: PNPLA6 transfected lysate (Predicted MW: 146.2 KDa).

Lane 2: Non-transfected lysate.

[Protocol Download](#)

- Western Blot (Recombinant protein)

[Protocol Download](#)

- Immunohistochemistry (Formalin/PFA-fixed paraffin-embedded sections)

Immunoperoxidase of monoclonal antibody to PNPLA6 on formalin-fixed paraffin-embedded human small Intestine. [antibody concentration 3 ug/ml]

[Protocol Download](#)

- Sandwich ELISA (Recombinant protein)

Detection limit for recombinant GST tagged PNPLA6 is 1 ng/ml as a capture antibody.

[Protocol Download](#)

- ELISA

Gene Info — PNPLA6

Entrez GeneID [10908](#)

GeneBank Accession# [NM_006702](#)

Protein Accession# [NP_006693.2](#)

Gene Name PNPLA6

Gene Alias NTE, NTEMND, SPG39, sws

Gene Description patatin-like phospholipase domain containing 6

Omim ID [603197](#)

Gene Ontology [Hyperlink](#)

Other Designations neuropathy target esterase