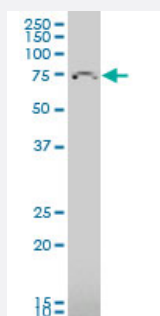


TBR1 polyclonal antibody (A01)

Catalog # H00010716-A01

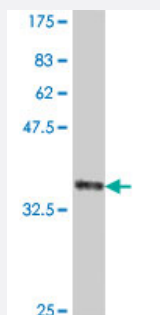
Size 50 uL

Applications



Western Blot (Cell lysate)

TBR1 polyclonal antibody (A01), Lot # DBA0060127QCS1 Western Blot analysis of TBR1 expression in HeLa S3 NE (Cat # L013V3).



Western Blot detection against Immunogen (37.99 KDa) .

Specification

Product Description	Mouse polyclonal antibody raised against a partial recombinant TBR1.
Immunogen	TBR1 (NP_006584, 1 a.a. ~ 108 a.a) partial recombinant protein with GST tag.
Sequence	MQLEHCLSPSIMLSKKFLNVSSSYPHSGGSELVLHDHPPIISTTDNLERS SPLKKITRGMTNQSDTDN FPDSKDSPGDVQRSKLSPVLDGVSELRHSFDGSAADRYLLS
Host	Mouse
Reactivity	Human
Interspecies Antigen Sequence	Mouse (99)

Quality Control Testing

Antibody Reactive Against Recombinant Protein.
Western Blot detection against Immunogen (37.99 KDa) .

Storage Buffer

50 % glycerol

Storage Instruction

Store at -20°C or lower. Aliquot to avoid repeated freezing and thawing.

Applications

- Western Blot (Cell lysate)

TBR1 polyclonal antibody (A01), Lot # DBA0060127QCS1 Western Blot analysis of TBR1 expression in Hela S3 NE (Cat # L013V3).

[Protocol Download](#)

- Western Blot (Recombinant protein)

[Protocol Download](#)

- ELISA

Gene Info — TBR1

Entrez GeneID

[10716](#)

GeneBank Accession#

[NM_006593](#)

Protein Accession#

[NP_006584](#)

Gene Name

TBR1

Gene Alias

MGC141978, TES-56

Gene Description

T-box, brain, 1

Omim ID

[604616](#)

Gene Ontology

[Hyperlink](#)

Gene Summary

This gene is a member of a conserved family of genes that share a common DNA-binding domain, the T-box. T-box genes encode transcription factors involved in the regulation of developmental processes. A similar protein has been disrupted in mice and shown to be critical for early cortical development, and causes loss of projection neurons in the olfactory bulbs and olfactory cortex. The C-terminal region of this similar protein was found to be necessary and sufficient for association with the guanylate kinase domain of calcium/calmodulin-dependent serine protein kinase. [provided by RefSeq]

Other Designations

T-brain-1

Disease

- [Colorectal Neoplasms](#)
- [Genetic Predisposition to Disease](#)