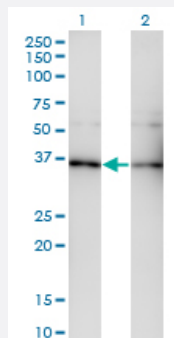


GNB5 monoclonal antibody (M01), clone 3A3

Catalog # H00010681-M01

Size 100 ug

Applications

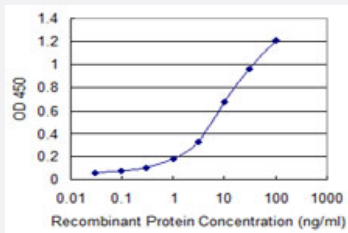


Western Blot (Transfected lysate)

Western Blot analysis of GNB5 expression in transfected 293T cell line by GNB5 monoclonal antibody (M01), clone 3A3.

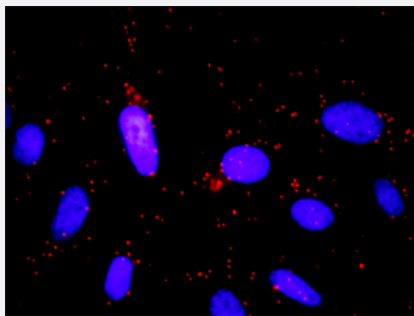
Lane 1: GNB5 transfected lysate(38.8 KDa).

Lane 2: Non-transfected lysate.



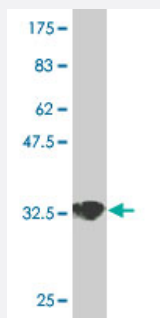
Sandwich ELISA (Recombinant protein)

Detection limit for recombinant GST tagged GNB5 is 0.1 ng/ml as a capture antibody.



In situ Proximity Ligation Assay (Cell)

Proximity Ligation Analysis of protein-protein interactions between GNG7 and GNB5. HeLa cells were stained with anti-GNG7 rabbit purified polyclonal 1:1200 and anti-GNB5 mouse monoclonal antibody 1:50. Each red dot represents the detection of protein-protein interaction complex, and nuclei were counterstained with DAPI (blue).



Western Blot detection against Immunogen (35.64 KDa) .

Specification

Product Description	Mouse monoclonal antibody raised against a partial recombinant GNB5.
Immunogen	GNB5 (NP_057278, 1 a.a. ~ 90 a.a) partial recombinant protein with GST tag. MW of the GST tag alone is 26 KDa.
Sequence	MCDQTFLVNVFGSCDKCFKQRALRPVFKKSQQLSYCSTCAEIMATEGLHENETLASLKSEAESL KGKLEEEERAKLHDVELHQVAERVEAL
Host	Mouse
Reactivity	Human
Interspecies Antigen Sequence	Mouse (99)
Isotype	IgG1 Kappa
Quality Control Testing	Antibody Reactive Against Recombinant Protein. Western Blot detection against Immunogen (35.64 KDa) .
Storage Buffer	In 1x PBS, pH 7.4
Storage Instruction	Store at -20°C or lower. Aliquot to avoid repeated freezing and thawing.

Applications

● Western Blot (Transfected lysate)

Western Blot analysis of GNB5 expression in transfected 293T cell line by GNB5 monoclonal antibody (M01), clone 3A3.

Lane 1: GNB5 transfected lysate(38.8 KDa).

Lane 2: Non-transfected lysate.

[Protocol Download](#)

- Western Blot (Recombinant protein)

[Protocol Download](#)

- Sandwich ELISA (Recombinant protein)

Detection limit for recombinant GST tagged GNB5 is 0.1 ng/ml as a capture antibody.

[Protocol Download](#)

- ELISA

- *In situ* Proximity Ligation Assay (Cell)

Proximity Ligation Analysis of protein-protein interactions between GNG7 and GNB5. HeLa cells were stained with anti-GNG7 rabbit purified polyclonal 1:1200 and anti-GNB5 mouse monoclonal antibody 1:50. Each red dot represents the detection of protein-protein interaction complex, and nuclei were counterstained with DAPI (blue).

Gene Info — GNB5

Entrez GeneID [10681](#)

GeneBank Accession# [NM_016194](#)

Protein Accession# [NP_057278](#)

Gene Name GNB5

Gene Alias FLJ37457, FLJ43714, GB5

Gene Description guanine nucleotide binding protein (G protein), beta 5

Omim ID [604447](#)

Gene Ontology [Hyperlink](#)

Gene Summary Heterotrimeric guanine nucleotide-binding proteins (G proteins), which integrate signals between receptors and effector proteins, are composed of an alpha, a beta, and a gamma subunit. These subunits are encoded by families of related genes. This gene encodes a beta subunit. Beta subunits are important regulators of alpha subunits, as well as of certain signal transduction receptors and effectors. Alternatively spliced transcript variants encoding different isoforms exist. [provided by RefSeq]

Other Designations G protein, beta subunit 5L|G protein, beta-5 subunit|guanine nucleotide-binding protein, beta subunit 5L|guanine nucleotide-binding protein, beta-5 subunit|transducin beta chain 5

Pathway

- [Chemokine signaling pathway](#)

Disease

- [Genetic Predisposition to Disease](#)
- [Hematologic Diseases](#)
- [Occupational Diseases](#)