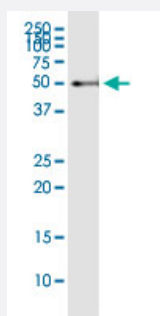


KHDRBS1 (Human) IP-WB Antibody Pair

Catalog # H00010657-PW2

Size 1 Set

Applications



Immunoprecipitation of KHDRBS1 transfected lysate using rabbit polyclonal anti-KHDRBS1 and Protein A Magnetic Bead ([U0007](#)), and immunoblotted with mouse purified polyclonal anti-KHDRBS1.

Specification

Product Description	This IP-WB antibody pair set comes with one antibody for immunoprecipitation and another to detect the precipitated protein in western blot.
Reactivity	Human
Interspecies Antigen Sequence	Mouse (93); Rat (94)
Quality Control Testing	Immunoprecipitation-Western Blot (IP-WB) Immunoprecipitation of KHDRBS1 transfected lysate using rabbit polyclonal anti-KHDRBS1 and Protein A Magnetic Bead (U0007), and immunoblotted with mouse purified polyclonal anti-KHDRBS1.
Supplied Product	Antibody pair set content: 1. Antibody pair for IP: rabbit polyclonal anti-KHDRBS1 (300 ul) 2. Antibody pair for WB: mouse purified polyclonal anti-KHDRBS1 (50 ug)
Storage Instruction	Store reagents of the antibody pair set at -20°C or lower. Please aliquot to avoid repeated freeze thaw cycle. Reagents should be returned to -20°C storage immediately after use.

Applications

- Immunoprecipitation-Western Blot

[Protocol Download](#)

Gene Info — KHDRBS1

Entrez GeneID	10657
Gene Name	KHDRBS1
Gene Alias	FLJ34027, Sam68, p62
Gene Description	KH domain containing, RNA binding, signal transduction associated 1
Omim ID	602489
Gene Ontology	Hyperlink
Gene Summary	RNA binding
Other Designations	GAP-associated tyrosine phosphoprotein p62 (Sam68) OTTHUMP00000004022