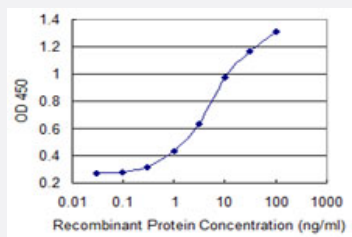


TAF6L monoclonal antibody (M01), clone 1C5

Catalog # H00010629-M01

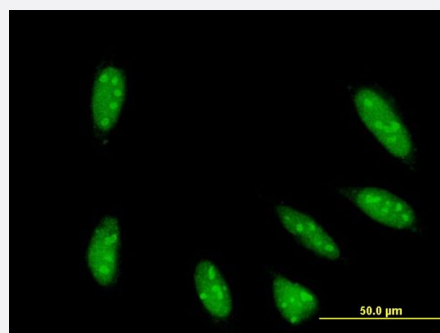
Size 100 ug

Applications



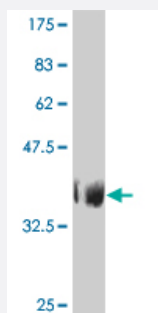
Sandwich ELISA (Recombinant protein)

Detection limit for recombinant GST tagged TAF6L is 0.1 ng/ml as a capture antibody.



Immunofluorescence

Immunofluorescence of monoclonal antibody to TAF6L on HeLa cell . [antibody concentration 10 ug/ml]



Western Blot detection against Immunogen (37.62 KDa) .

Specification

Product Description

Mouse monoclonal antibody raised against a partial recombinant TAF6L.

| | |
|-------------------------------|--|
| Immunogen | TAF6L (NP_006464, 2 a.a. ~ 109 a.a) partial recombinant protein with GST tag. MW of the GST tag alone is 26 KDa. |
| Sequence | SEREERRFVEIPRESVRLMAESTGLELSDEVAALLAEDVCYRLREATQNSSQFMKHTKRRKLTVE DFNRALRWSSVEAVCGYGSQEALPMRPAREGELYFPEDREVNL |
| Host | Mouse |
| Reactivity | Human |
| Interspecies Antigen Sequence | Mouse (93); Rat (93) |
| Isotype | IgG2b Kappa |
| Quality Control Testing | Antibody Reactive Against Recombinant Protein. Western Blot detection against Immunogen (37.62 KDa) . |
| Storage Buffer | In 1x PBS, pH 7.4 |
| Storage Instruction | Store at -20°C or lower. Aliquot to avoid repeated freezing and thawing. |

Applications

- Western Blot (Recombinant protein)

[Protocol Download](#)

- Sandwich ELISA (Recombinant protein)

Detection limit for recombinant GST tagged TAF6L is 0.1 ng/ml as a capture antibody.

[Protocol Download](#)

- ELISA

- Immunofluorescence

Immunofluorescence of monoclonal antibody to TAF6L on HeLa cell . [antibody concentration 10 ug/ml]

Gene Info — TAF6L

Entrez GeneID [10629](#)

GeneBank Accession# [NM_006473](#)

| | |
|--------------------|--|
| Protein Accession# | NP_006464 |
| Gene Name | TAF6L |
| Gene Alias | FLJ11136, MGC4288, PAF65A |
| Gene Description | TAF6-like RNA polymerase II, p300/CBP-associated factor (PCAF)-associated factor, 65kDa |
| Omim ID | 602946 |
| Gene Ontology | Hyperlink |
| Gene Summary | <p>Initiation of transcription by RNA polymerase II requires the activities of more than 70 polypeptide s. The protein that coordinates these activities is transcription factor IID (TFIID), which binds to the core promoter to position the polymerase properly, serves as the scaffold for assembly of the remainder of the transcription complex, and acts as a channel for regulatory signals. TFIID is composed of the TATA-binding protein (TBP) and a group of evolutionarily conserved proteins known as TBP-associated factors or TAFs. TAFs may participate in basal transcription, serve as coactivators, function in promoter recognition or modify general transcription factors (GTFs) to facilitate complex assembly and transcription initiation. This gene encodes a protein that is a component of the PCAF histone acetylase complex and structurally similar to one of the histone-like TAFs, TAF6. The PCAF histone acetylase complex, which is composed of more than 20 polypeptides some of which are TAFs, is required for myogenic transcription and differentiation. [provided by RefSeq</p> |
| Other Designations | TAF6-like RNA polymerase II TAF6-like RNA polymerase II, p300/CBP-associated factor (PCAF)-associated factor, 65 kD p300/CBP-associated factor (PCAF)-associated factor 65 |

Pathway

- [Basal transcription factors](#)