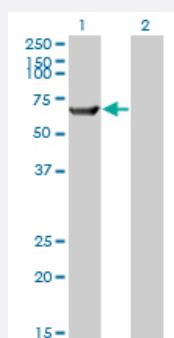


# TRIM16 monoclonal antibody (M01), clone 5F4

Catalog # H00010626-M01

Size 100 ug

## Applications

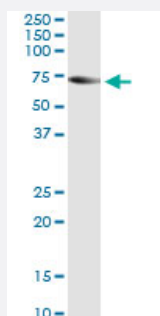


### Western Blot (Transfected lysate)

Western Blot analysis of TRIM16 expression in transfected 293T cell line by TRIM16 monoclonal antibody (M01), clone 5F4.

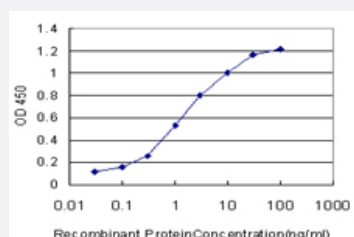
Lane 1: TRIM16 transfected lysate (64 KDa).

Lane 2: Non-transfected lysate.



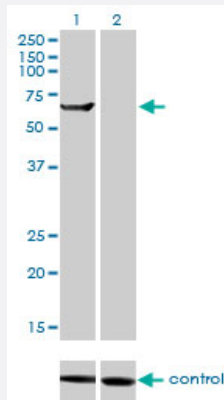
### Immunoprecipitation

Immunoprecipitation of TRIM16 transfected lysate using anti-TRIM16 monoclonal antibody and Protein A Magnetic Bead, and immunoblotted with TRIM16 MaxPab rabbit polyclonal antibody.



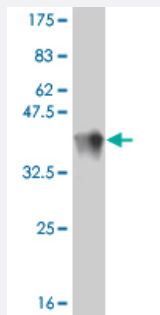
### Sandwich ELISA (Recombinant protein)

Detection limit for recombinant GST tagged TRIM16 is approximately 0.03 ng/ml as a capture antibody.



## RNAi Knockdown (Antibody validated)

Western blot analysis of TRIM16 over-expressed 293 cell line, cotransfected with TRIM16 Validated Chimera RNAi ( Cat # H00010626-R01V ) (Lane 2) or non-transfected control (Lane 1). Blot probed with TRIM16 monoclonal antibody (M01), clone 5F4 (Cat # H00010626-M01 ). GAPDH ( 36.1 kDa ) used as specificity and loading control.



Western Blot detection against Immunogen (37.73 KDa) .

## Specification

<b>Product Description</b>	Mouse monoclonal antibody raised against a partial recombinant TRIM16.
<b>Immunogen</b>	TRIM16 (NP_006461, 165 a.a. ~ 273 a.a) partial recombinant protein with GST tag. MW of the GST tag alone is 26 KDa.
<b>Sequence</b>	LDAARRDKEAELQCTQLDLERKLKLNENAI SRLQANQKSVLVSVSEVKAVAEMQFGELLA AVRK AQANVMLFLEEKEQAALSQANGIKAHLEYRSAEMEKSKQELERMA
<b>Host</b>	Mouse
<b>Reactivity</b>	Human
<b>Interspecies Antigen Sequence</b>	Mouse (77); Rat (76)
<b>Isotype</b>	IgG2a Kappa
<b>Quality Control Testing</b>	Antibody Reactive Against Recombinant Protein. Western Blot detection against Immunogen (37.73 KDa) .
<b>Storage Buffer</b>	In 1x PBS, pH 7.4
<b>Storage Instruction</b>	Store at -20°C or lower. Aliquot to avoid repeated freezing and thawing.

## Applications

- Western Blot (Transfected lysate)

Western Blot analysis of TRIM16 expression in transfected 293T cell line by TRIM16 monoclonal antibody (M01), clone 5F4.

Lane 1: TRIM16 transfected lysate(64 KDa).

Lane 2: Non-transfected lysate.

[Protocol Download](#)

- Western Blot (Recombinant protein)

[Protocol Download](#)

- Immunoprecipitation

Immunoprecipitation of TRIM16 transfected lysate using anti-TRIM16 monoclonal antibody and Protein A Magnetic Bead, and immunoblotted with TRIM16 MaxPab rabbit polyclonal antibody.

[Protocol Download](#)

- Sandwich ELISA (Recombinant protein)

Detection limit for recombinant GST tagged TRIM16 is approximately 0.03ng/ml as a capture antibody.

[Protocol Download](#)

- ELISA

- RNAi Knockdown (Antibody validated)

Western blot analysis of TRIM16 over-expressed 293 cell line, cotransfected with TRIM16 Validated Chimera RNAi ( Cat # H00010626-R01V ) (Lane 2) or non-transfected control (Lane 1). Blot probed with TRIM16 monoclonal antibody (M01), clone 5F4 (Cat # H00010626-M01 ). GAPDH ( 36.1 kDa ) used as specificity and loading control.

[Protocol Download](#)

## Gene Info — TRIM16

Entrez GeneID	<a href="#">10626</a>
---------------	-----------------------

GeneBank Accession#	<a href="#">NM_006470</a>
---------------------	---------------------------

Protein Accession#	<a href="#">NP_006461</a>
--------------------	---------------------------

Gene Name	TRIM16
-----------	--------

Gene Alias	EBBP
Gene Description	tripartite motif-containing 16
Omim ID	<a href="#">609505</a>
Gene Ontology	<a href="#">Hyperlink</a>
Gene Summary	<p>This gene was identified as an estrogen and anti-estrogen regulated gene in epithelial cells stably expressing estrogen receptor. The protein encoded by this gene contains two B box domains and a coiled-coiled region that are characteristic of the B box zinc finger protein family. The proteins of this family have been reported to be involved in a variety of biological processes including cell growth, differentiation and pathogenesis. Expression of this gene was detected in most tissues. Its function, however, has not yet been determined. [provided by RefSeq</p>
Other Designations	estrogen-responsive B box protein