

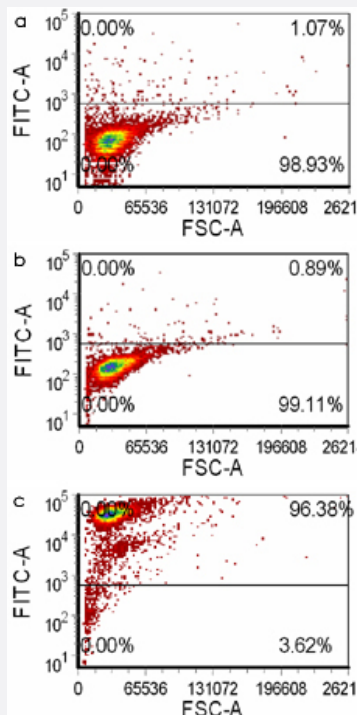
MaxPab®

CAP1 purified MaxPab mouse polyclonal antibody (B01P)

Catalog # H00010487-B01P

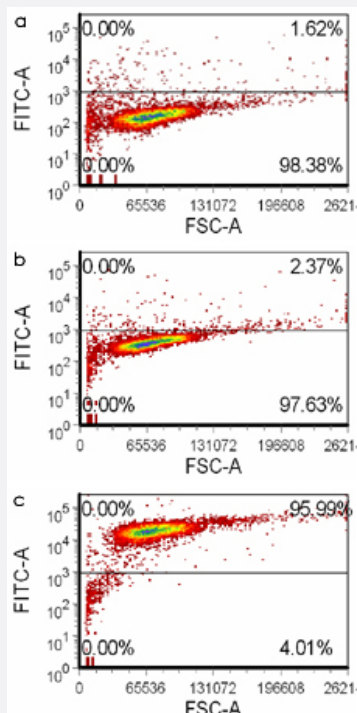
Size 50 ug

Applications



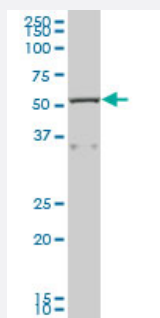
Flow Cytometry

FACS analysis of (a) negative control unstained, (b) negative control goat anti-mouse-FITC stained and (c) CAP1 MaxPab polyclonal antibody stained methanol-treated human promonocytic THP-1 cells. (By courtesy of Dr. Eli Moallem)



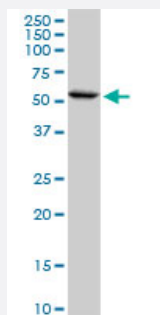
Flow Cytometry

FACS analysis of (a) negative control unstained, (b) negative control goat anti-mouse-FITC stained and (c) CAP1 MaxPab polyclonal antibody stained methanol-treated human HeLa cells. (By courtesy of Dr. Eli Moallem)



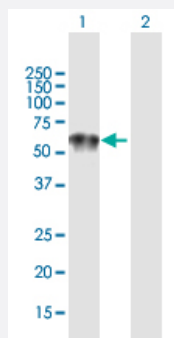
Western Blot (Tissue lysate)

CAP1 MaxPab polyclonal antibody. Western Blot analysis of CAP1 expression in human colon.



Western Blot (Cell lysate)

CAP1 MaxPab polyclonal antibody. Western Blot analysis of CAP1 expression in A-431.

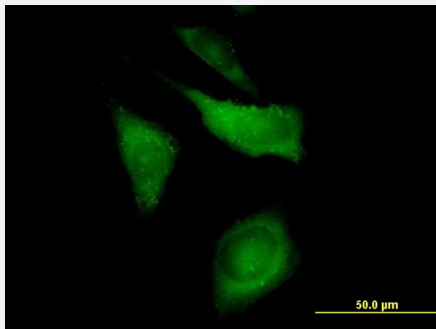


Western Blot (Transfected lysate)

Western Blot analysis of CAP1 expression in transfected 293T cell line ([H00010487-T01](#)) by CAP1 MaxPab polyclonal antibody.

Lane 1: CAP1 transfected lysate(52.25 KDa).

Lane 2: Non-transfected lysate.



Immunofluorescence

Immunofluorescence of purified MaxPab antibody to CAP1 on HeLa cell.
[antibody concentration 10 ug/ml]

Specification

Product Description	Mouse polyclonal antibody raised against a full-length human CAP1 protein.
Immunogen	CAP1 (NP_006358.1, 1 a.a. ~ 475 a.a) full-length human protein.
Sequence	MADMQNLERLERAVGRLEAVSHTSDMHRGYADSPSKAGAAPYVQAFDSLLAGPVAEYLKISKE IGGDVQKHAEMVHTGLKLERALLVTASQCQQAENKLSDLLAPISEKIKEVITFREKNRGSKLFNH LSAVSESIQALGWVAMAPKPGPYVKEMNDAAMFYTNRLKEYKDVKKHVDWVKAYLSMTELQ AYIKEFHHTGLAWSKTGPVAKELSGLPSPGSPAGSGPPPPPPGPPPPPVSTSSGSDESASRSALF AQINQGESITHALKHVSDDMKTHKNPALKAQSGPVRSGPKPFSAPKPQTSPSPKRATKKEPAVL ELEGKKWRVENQENVSNLVIEDTELKQVAYIKCVNTTLQIKGKINSITVDNCKKLGLVFDDVVGME IINSKDVKVQVMGKVPTISINKTDGCHAYLSKNSLDCEIVSAKSSEMNVLIPTGGDFNEFPVPEQF KTLWNGQKLVTTVTEIAG
Host	Mouse
Reactivity	Human
Interspecies Antigen Sequence	Mouse (95); Rat (95)
Quality Control Testing	Antibody reactive against mammalian transfected lysate.
Storage Buffer	In 1x PBS, pH 7.4
Storage Instruction	Store at -20°C or lower. Aliquot to avoid repeated freezing and thawing.

Applications

● Flow Cytometry

FACS analysis of (a) negative control unstained, (b) negative control goat anti-mouse-FITC stained and (c) CAP1 MaxPab polyclonal antibody stained methanol-treated human promonocytic THP-1 cells. (By courtesy of Dr. Eli Moallem)

- Flow Cytometry

FACS analysis of (a) negative control unstained, (b) negative control goat anti-mouse-FITC stained and (c) CAP1 MaxPab polyclonal antibody stained methanol-treated human HeLa cells. (By courtesy of Dr. Eli Moallem)

- Western Blot (Tissue lysate)

CAP1 MaxPab polyclonal antibody. Western Blot analysis of CAP1 expression in human colon.

[Protocol Download](#)

- Western Blot (Cell lysate)

CAP1 MaxPab polyclonal antibody. Western Blot analysis of CAP1 expression in A-431.

[Protocol Download](#)

- Western Blot (Transfected lysate)

Western Blot analysis of CAP1 expression in transfected 293T cell line ([H00010487-T01](#)) by CAP1 MaxPab polyclonal antibody.

Lane 1: CAP1 transfected lysate(52.25 KDa).

Lane 2: Non-transfected lysate.

[Protocol Download](#)

- Immunofluorescence

Immunofluorescence of purified MaxPab antibody to CAP1 on HeLa cell. [antibody concentration 10 ug/ml]

Gene Info — CAP1

Entrez GeneID	10487
---------------	-----------------------

GeneBank Accession#	NM_006367
---------------------	---------------------------

Protein Accession#	NP_006358.1
--------------------	-----------------------------

Gene Name	CAP1
-----------	------

Gene Alias	CAP, CAP1-PEN
------------	---------------

Gene Description	CAP, adenylate cyclase-associated protein 1 (yeast)
------------------	---

Gene Ontology	Hyperlink
---------------	---------------------------

Gene Summary

The protein encoded by this gene is related to the *S. cerevisiae* CAP protein, which is involved in the cyclic AMP pathway. The human protein is able to interact with other molecules of the same protein, as well as with CAP2 and actin. Alternatively spliced transcript variants have been identified . [provided by RefSeq]

Other Designations

OTTHUMP00000004820|OTTHUMP00000004821|OTTHUMP00000004822|adenylyl cyclase-associated protein

Publication Reference

- [Ehrlichia chaffeensis Tandem Repeat Protein Interacts with Multiple Host Targets Involved in Cell Signaling, Transcriptional Regulation and Vesicle Trafficking.](#)

Wakeel A, Kuriakose JA, McBride JW.

Infection and Immunity 2009 May; 77(5):1734.

Application: IF, Human, HeLa, THP-1 cells

Disease

- [Diabetes Mellitus](#)
- [Genetic Predisposition to Disease](#)