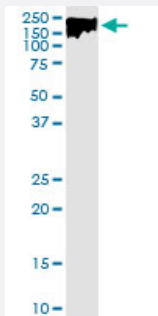


DLC1 (Human) IP-WB Antibody Pair

Catalog # H00010395-PW1

Size 1 Set

Applications



Immunoprecipitation of DLC1 transfected lysate using rabbit polyclonal anti-DLC1 and Protein A Magnetic Bead ([U0007](#)), and immunoblotted with mouse polyclonal anti-DLC1.

Specification

Product Description	This IP-WB antibody pair set comes with one antibody for immunoprecipitation and another to detect the precipitated protein in western blot.
Reactivity	Human
Interspecies Antigen Sequence	Mouse (83); Rat (92)
Quality Control Testing	Immunoprecipitation-Western Blot (IP-WB) Immunoprecipitation of DLC1 transfected lysate using rabbit polyclonal anti-DLC1 and Protein A Magnetic Bead (U0007), and immunoblotted with mouse polyclonal anti-DLC1.
Supplied Product	Antibody pair set content: 1. Antibody pair for IP: rabbit polyclonal anti-DLC1 (300 ul) 2. Antibody pair for WB: mouse polyclonal anti-DLC1 (50 ul)
Storage Instruction	Store reagents of the antibody pair set at -20°C or lower. Please aliquot to avoid repeated freeze thaw cycle. Reagents should be returned to -20°C storage immediately after use.

Applications

- Immunoprecipitation-Western Blot

[Protocol Download](#)

Gene Info — DLC1

Entrez GeneID [10395](#)

Gene Name DLC1

Gene Alias ARHGAP7, FLJ21120, HP, STARD12, p122-RhoGAP

Gene Description deleted in liver cancer 1

Omim ID [604258](#)

Gene Ontology [Hyperlink](#)

Gene Summary This gene is deleted in the primary tumor of hepatocellular carcinoma. It maps to 8p22-p21.3, a region frequently deleted in solid tumors. It is suggested that this gene is a candidate tumor suppressor gene for human liver cancer, as well as for prostate, lung, colorectal, and breast cancers. Alternative splicing at this locus results in several transcript variants encoding different isoforms. [provided by RefSeq]

Other Designations OTTHUMP00000116050|Rho-GTPase-activating protein 7|START domain containing protein 12|StAR-related lipid transfer (START) domain containing 12|StAR-related lipid transfer protein 12|deleted in liver cancer 1 variant 2

Disease

- [Angina Pectoris](#)
- [Carcinoma](#)
- [Cardiovascular Diseases](#)
- [Celiac Disease](#)
- [Coronary Vasospasm](#)
- [Diabetes Mellitus](#)
- [Edema](#)
- [Genetic Predisposition to Disease](#)

- [Liver Neoplasms](#)
- [Nasopharyngeal Neoplasms](#)
- [Prostate cancer](#)
- [Prostatic Neoplasms](#)
- [Tobacco Use Disorder](#)