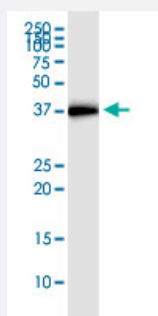


HMG20B (Human) IP-WB Antibody Pair

Catalog # H00010362-PW2

Size 1 Set

Applications



Immunoprecipitation of HMG20B transfected lysate using rabbit polyclonal anti-HMG20B and Protein A Magnetic Bead ([U0007](#)), and immunoblotted with mouse purified polyclonal anti-HMG20B.

Specification

Product Description	This IP-WB antibody pair set comes with one antibody for immunoprecipitation and another to detect the precipitated protein in western blot.
Reactivity	Human
Interspecies Antigen Sequence	Mouse (93); Rat (93)
Quality Control Testing	Immunoprecipitation-Western Blot (IP-WB) Immunoprecipitation of HMG20B transfected lysate using rabbit polyclonal anti-HMG20B and Protein A Magnetic Bead (U0007), and immunoblotted with mouse purified polyclonal anti-HMG20B.
Supplied Product	Antibody pair set content: 1. Antibody pair for IP: rabbit polyclonal anti-HMG20B (300 ul) 2. Antibody pair for WB: mouse purified polyclonal anti-HMG20B (50 ug)
Storage Instruction	Store reagents of the antibody pair set at -20°C or lower. Please aliquot to avoid repeated freeze thaw cycle. Reagents should be returned to -20°C storage immediately after use.

Applications

- Immunoprecipitation-Western Blot

[Protocol Download](#)

Gene Info — HMG20B

Entrez GeneID	10362
Gene Name	HMG20B
Gene Alias	BRAF25, BRAF35, FLJ26127, HMGX2, HMGXB2, PP7706, SMARCE1r, SOXL, pp8857
Gene Description	high-mobility group 20B
Omim ID	605535
Gene Ontology	Hyperlink
Gene Summary	member 1-related Sox-like transcriptional factor
Other Designations	HMG box domain containing 2 SWI/SNF-related matrix-associated actin-dependent regulator of chromatin subfamily E, member 1-related Sox-like transcriptional factor