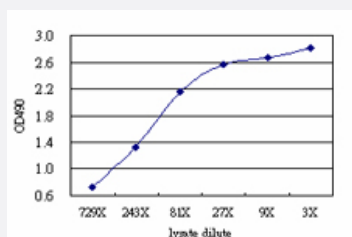


HMG20B (Human) Matched Antibody Pair

Catalog # H00010362-AP51

Size 1 Set

Applications



Sandwich ELISA detection sensitivity ranging from approximately 729x to 3x dilution of the HMG20B 293T overexpression lysate (non-denatured).

Specification

Product Description	This antibody pair set comes with a matched antibody pair to detect and quantify the protein level of human HMG20B.
Reactivity	Human
Interspecies Antigen Sequence	Mouse (93); Rat (93)
Quality Control Testing	Standard curve using HMG20B 293T overexpression lysate (non-denatured) as an analyte. Sandwich ELISA detection sensitivity ranging from approximately 729x to 3x dilution of the HMG20B 293T overexpression lysate (non-denatured).
Supplied Product	Antibody pair set content: 1. Capture antibody: mouse monoclonal anti-HMG20B (100 ug) 2. Detection antibody: rabbit purified polyclonal anti-HMG20B (50 ug) *Reagents are sufficient for at least 3-5 x 96 well plates using recommended protocols.
Storage Instruction	Store reagents of the antibody pair set at -20°C or lower. Please aliquot to avoid repeated freeze thaw cycle. Reagents should be returned to -20°C storage immediately after use.

Applications

- ELISA Pair (Transfected lysate)

[Protocol Download](#)

Gene Info — HMG20B

Entrez GeneID [10362](#)

Gene Name HMG20B

Gene Alias BRAF25, BRAF35, FLJ26127, HMGX2, HMGXB2, PP7706, SMARCE1r, SOXL, pp8857

Gene Description high-mobility group 20B

Omim ID [605535](#)

Gene Ontology [Hyperlink](#)

Gene Summary member 1-related|Sox-like transcriptional factor

Other Designations HMG box domain containing 2|SWI/SNF-related matrix-associated actin-dependent regulator of chromatin subfamily E, member 1-related|Sox-like transcriptional factor