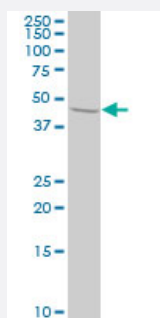


STAM2 monoclonal antibody (M01), clone 1A10

Catalog # H00010254-M01

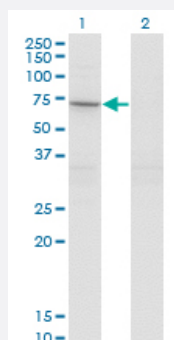
Size 100 ug

Applications



Western Blot (Cell lysate)

STAM2 monoclonal antibody (M01), clone 1A10 Western Blot analysis of STAM2 expression in HeLa (Cat # L013V1).

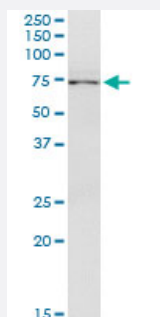


Western Blot (Transfected lysate)

Western Blot analysis of STAM2 expression in transfected 293T cell line by STAM2 monoclonal antibody (M01), clone 1A10.

Lane 1: STAM2 transfected lysate (Predicted MW: 58.2 KDa).

Lane 2: Non-transfected lysate.

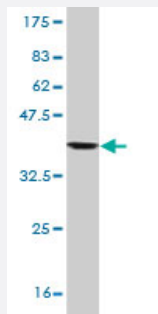
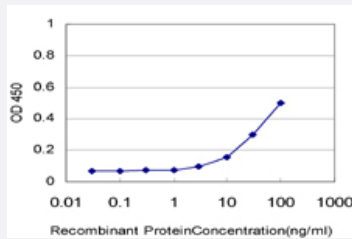


Immunoprecipitation

Immunoprecipitation of STAM2 transfected lysate using anti-STAM2 monoclonal antibody and Protein A Magnetic Bead, and immunoblotted with STAM2 monoclonal antibody.

Sandwich ELISA (Recombinant protein)

Detection limit for recombinant GST tagged STAM2 is approximately 10ng/ml as a capture antibody.



Western Blot detection against Immunogen (37.84 KDa) .

Specification

| | |
|--------------------------------------|--|
| Product Description | Mouse monoclonal antibody raised against a partial recombinant STAM2. |
| Immunogen | STAM2 (NP_005834, 416 a.a. ~ 525 a.a) partial recombinant protein with GST tag. MW of the GST tag alone is 26 KDa. |
| Sequence | QSYSLGPDQIGPLRSLPPNVNSSVTAQPAQTSYLSGQDTVSNPTYMNQNSNLQSATGTTAYTQQ MGMSVDMSSYQNTTSNLPQLAGFPVTPAHPVAQQHTNYHQQPLL |
| Host | Mouse |
| Reactivity | Human |
| Interspecies Antigen Sequence | Mouse (86); Rat (84) |
| Isotype | IgG2a Kappa |
| Quality Control Testing | Antibody Reactive Against Recombinant Protein. Western Blot detection against Immunogen (37.84 KDa) . |
| Storage Buffer | In 1x PBS, pH 7.4 |
| Storage Instruction | Store at -20°C or lower. Aliquot to avoid repeated freezing and thawing. |

Applications

- Western Blot (Cell lysate)

STAM2 monoclonal antibody (M01), clone 1A10 Western Blot analysis of STAM2 expression in HeLa (Cat # L013V1).

[Protocol Download](#)

- Western Blot (Transfected lysate)

Western Blot analysis of STAM2 expression in transfected 293T cell line by STAM2 monoclonal antibody (M01), clone 1A10.

Lane 1: STAM2 transfected lysate (Predicted MW: 58.2 KDa).

Lane 2: Non-transfected lysate.

[Protocol Download](#)

- Western Blot (Recombinant protein)

[Protocol Download](#)

- Immunoprecipitation

Immunoprecipitation of STAM2 transfected lysate using anti-STAM2 monoclonal antibody and Protein A Magnetic Bead, and immunoblotted with STAM2 monoclonal antibody.

[Protocol Download](#)

- Sandwich ELISA (Recombinant protein)

Detection limit for recombinant GST tagged STAM2 is approximately 10ng/ml as a capture antibody.

[Protocol Download](#)

- ELISA

Gene Info — STAM2

| | |
|---------------|-----------------------|
| Entrez GeneID | 10254 |
|---------------|-----------------------|

| | |
|---------------------|---------------------------|
| GeneBank Accession# | NM_005843 |
|---------------------|---------------------------|

| | |
|--------------------|---------------------------|
| Protein Accession# | NP_005834 |
|--------------------|---------------------------|

| | |
|-----------|-------|
| Gene Name | STAM2 |
|-----------|-------|

| | |
|------------|-----------------------------------|
| Gene Alias | DKFZp564C047, Hbp, STAM2A, STAM2B |
|------------|-----------------------------------|

| | |
|--------------------|---|
| Gene Description | signal transducing adaptor molecule (SH3 domain and ITAM motif) 2 |
| Omim ID | 606244 |
| Gene Ontology | Hyperlink |
| Gene Summary | <p>The protein encoded by this gene is closely related to STAM, an adaptor protein involved in the downstream signaling of cytokine receptors, both of which contain a SH3 domain and the immunoreceptor tyrosine-based activation motif (ITAM). Similar to STAM, this protein acts downstream of JAK kinases, and is phosphorylated in response to cytokine stimulation. This protein and STAM thus are thought to exhibit compensatory effects on the signaling pathway downstream of JAK kinases upon cytokine stimulation. [provided by RefSeq]</p> |
| Other Designations | Hrs-binding protein STAM-like protein containing SH3 and ITAM domains 2 signal transducing adaptor molecule 2 |

Pathway

- [Endocytosis](#)
- [Jak-STAT signaling pathway](#)