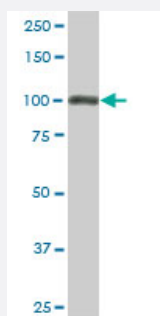


TRIM28 monoclonal antibody (M02), clone 1D11

Catalog # H00010155-M02

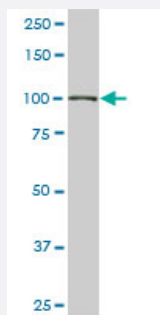
Size 100 ug

Applications



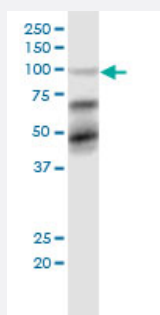
Western Blot (Cell lysate)

TRIM28 monoclonal antibody (M02), clone 1D11. Western Blot analysis of TRIM28 expression in PC-12 (Cat # L012V1).



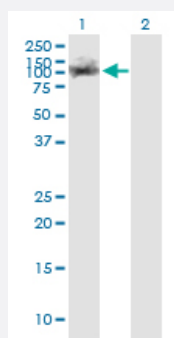
Western Blot (Cell lysate)

TRIM28 monoclonal antibody (M02), clone 1D11. Western Blot analysis of TRIM28 expression in NIH/3T3 (Cat # L018V1).



Western Blot (Cell lysate)

TRIM28 monoclonal antibody (M02), clone 1D11. Western Blot analysis of TRIM28 expression in MCF-7.

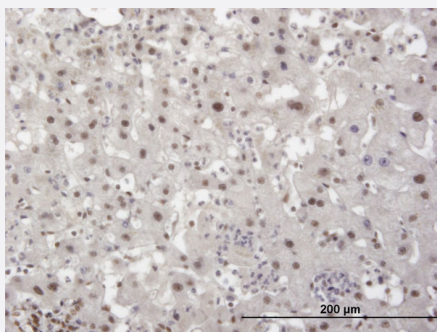


Western Blot (Transfected lysate)

Western Blot analysis of TRIM28 expression in transfected 293T cell line by TRIM28 monoclonal antibody (M02), clone 1D11.

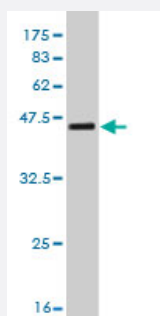
Lane 1: TRIM28 transfected lysate (Predicted MW: 88.5 KDa).

Lane 2: Non-transfected lysate.



Immunohistochemistry (Formalin/PFA-fixed paraffin-embedded sections)

Immunoperoxidase of monoclonal antibody to TRIM28 on formalin-fixed paraffin-embedded human liver. [antibody concentration 3 ug/ml]



Western Blot detection against Immunogen (41.69 KDa) .

Specification

| | |
|--------------------------------------|--|
| Product Description | Mouse monoclonal antibody raised against a partial recombinant TRIM28. |
| Immunogen | TRIM28 (AAH04978, 379 a.a. ~ 524 a.a) partial recombinant protein with GST tag. MW of the GST tag alone is 26 KDa. |
| Sequence | MDPVEPHGEMKFQWDLNAWTKSAEAFGKIVAERPGTNSTGPAPMAPPRAPGPLSKQGSGSSQ PMEVQEGYGFSGDDPYSSAEPHVSGVKRSRSGEGEVSGLMRKVPRVSLERLDLDTADSQP PVFKVFPGSTTEDYNLMIER |
| Host | Mouse |
| Reactivity | Human, Mouse, Rat |
| Interspecies Antigen Sequence | Mouse (93); Rat (93) |
| Isotype | IgG2a Kappa |
| Quality Control Testing | Antibody Reactive Against Recombinant Protein. Western Blot detection against Immunogen (41.69 KDa) . |
| Storage Buffer | In 1x PBS, pH 7.4 |
| Storage Instruction | Store at -20°C or lower. Aliquot to avoid repeated freezing and thawing. |

Applications

- Western Blot (Cell lysate)

TRIM28 monoclonal antibody (M02), clone 1D11. Western Blot analysis of TRIM28 expression in PC-12 (Cat # L012V1).

[Protocol Download](#)

- Western Blot (Cell lysate)

TRIM28 monoclonal antibody (M02), clone 1D11. Western Blot analysis of TRIM28 expression in NIH/3T3 (Cat # L018V1).

[Protocol Download](#)

- Western Blot (Cell lysate)

TRIM28 monoclonal antibody (M02), clone 1D11. Western Blot analysis of TRIM28 expression in MCF-7.

[Protocol Download](#)

- Western Blot (Transfected lysate)

Western Blot analysis of TRIM28 expression in transfected 293T cell line by TRIM28 monoclonal antibody (M02), clone 1D11.

Lane 1: TRIM28 transfected lysate (Predicted MW: 88.5 KDa).

Lane 2: Non-transfected lysate.

[Protocol Download](#)

- Western Blot (Recombinant protein)

[Protocol Download](#)

- Immunohistochemistry (Formalin/PFA-fixed paraffin-embedded sections)

Immunoperoxidase of monoclonal antibody to TRIM28 on formalin-fixed paraffin-embedded human liver. [antibody concentration 3 ug/ml]

[Protocol Download](#)

- ELISA

Gene Info — TRIM28

Entrez GeneID [10155](#)

GeneBank Accession# [BC004978](#)

Protein Accession# [AAH04978](#)

| | |
|--------------------|---|
| Gene Name | TRIM28 |
| Gene Alias | FLJ29029, KAP1, RNF96, TF1B, TIF1B |
| Gene Description | tripartite motif-containing 28 |
| Omim ID | 601742 |
| Gene Ontology | Hyperlink |
| Gene Summary | <p>The protein encoded by this gene mediates transcriptional control by interaction with the Kruppel-associated box repression domain found in many transcription factors. The protein localizes to the nucleus and is thought to associate with specific chromatin regions. The protein is a member of the tripartite motif family. This tripartite motif includes three zinc-binding domains, a RING, a B-box type 1 and a B-box type 2, and a coiled-coil region. [provided by RefSeq]</p> |
| Other Designations | KRAB-associated protein 1 nuclear corepressor KAP-1 transcriptional intermediary factor 1-beta tripartite motif-containing 28 protein |