

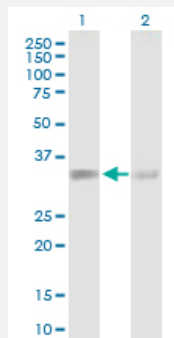
MaxPab®

ACTR2 purified MaxPab rabbit polyclonal antibody (D01P)

Catalog # H00010097-D01P

Size 100 ug

Applications



Western Blot (Transfected lysate)

Western Blot analysis of ACTR2 expression in transfected 293T cell line ([H00010097-T02](#)) by ACTR2 MaxPab polyclonal antibody.

Lane 1: ACTR2 transfected lysate(38.80 KDa).

Lane 2: Non-transfected lysate.

Specification

Product Description

Rabbit polyclonal antibody raised against a full-length human ACTR2 protein.

Immunogen

ACTR2 (AAH36253.1, 1 a.a. ~ 339 a.a) full-length human protein.

Sequence

MVGDEASELRSMLEVNYPMENGIVRNWDDMKHLWDYTFGPEKLNIDTRNCKILLTEPPMNPTKN
REKIVEVMFETYQFSGVYVAIQAVLTLYAQGLLTGVVVDSDGDGVTHICPVYEGFSLPHLTRRLDIAG
RDITRYLIKLLLLRGYAFNHSAFETVRMIKEKLCYVGYNIEQEQKLALETTVLVESYTLPDGRIKVG
GERFEAPEALFQPHLINVEGVGVAELLFNTIQAADIDTRSEFYKHVLSGGSTMYPGLPSRLERELK
QLYLERVLKGDVEKLSKFKISIEDPPRRKHMVFLGGAVLADIMKDKDNFWMTRQEYQEKGVRVLE
KLGVTVR

Host

Rabbit

Reactivity

Human

Interspecies Antigen Sequence

Rat (99)

Quality Control Testing

Antibody reactive against mammalian transfected lysate.

Storage Buffer

In 1x PBS, pH 7.4

Storage Instruction

Store at -20°C or lower. Aliquot to avoid repeated freezing and thawing.

Applications

- Western Blot (Transfected lysate)

Western Blot analysis of ACTR2 expression in transfected 293T cell line ([H00010097-T02](#)) by ACTR2 MaxPab polyclonal antibody.

Lane 1: ACTR2 transfected lysate(38.80 KDa).

Lane 2: Non-transfected lysate.

[Protocol Download](#)

Gene Info — ACTR2

Entrez GeneID	10097
---------------	-----------------------

GeneBank Accession#	BC036253.1
---------------------	----------------------------

Protein Accession#	AAH36253.1
--------------------	----------------------------

Gene Name	ACTR2
-----------	-------

Gene Alias	ARP2
------------	------

Gene Description	ARP2 actin-related protein 2 homolog (yeast)
------------------	--

Omim ID	604221
---------	------------------------

Gene Ontology	Hyperlink
---------------	---------------------------

Gene Summary	The specific function of this gene has not yet been determined; however, the protein it encodes is known to be a major constituent of the ARP2/3 complex. This complex is located at the cell surface and is essential to cell shape and motility through lamellipodial actin assembly and protrusion. Two transcript variants encoding different isoforms have been found for this gene. [provided by RefSeq]
--------------	--

Other Designations	actin-related protein 2
--------------------	-------------------------