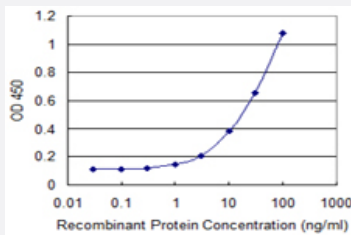


COL4A3BP monoclonal antibody (M02), clone 1A1

Catalog # H00010087-M02

Size 100 ug

Applications



Sandwich ELISA (Recombinant protein)

Detection limit for recombinant GST tagged COL4A3BP is 0.3 ng/ml as a capture antibody.

Specification

Product Description	Mouse monoclonal antibody raised against a partial recombinant COL4A3BP.
Immunogen	COL4A3BP (NP_112729, 499 a.a. ~ 598 a.a) partial recombinant protein with GST tag. MW of the GST tag alone is 26 KDa.
Sequence	TWVCNFSVDHDSAPLNNRCVRAKINVAMICQTLVSPPEGNQEISRDNILCKITYVANVNPGGWAP ASVLRVAKREYPKFLKRFTSYVQEKTAGKPILF
Host	Mouse
Reactivity	Human
Interspecies Antigen Sequence	Mouse (92); Rat (92)
Isotype	IgG2b Kappa
Quality Control Testing	Antibody Reactive Against Recombinant Protein.
Storage Buffer	In 1x PBS, pH 7.4
Storage Instruction	Store at -20°C or lower. Aliquot to avoid repeated freezing and thawing.

Applications

- Sandwich ELISA (Recombinant protein)

Detection limit for recombinant GST tagged COL4A3BP is 0.3 ng/ml as a capture antibody.

[Protocol Download](#)

- ELISA

Gene Info — COL4A3BP

Entrez GeneID	10087
---------------	-----------------------

GeneBank Accession#	NM_031361
---------------------	---------------------------

Protein Accession#	NP_112729
--------------------	---------------------------

Gene Name	COL4A3BP
-----------	----------

Gene Alias	CERT, CERTL, FLJ20597, GPBP, STARD11
------------	--------------------------------------

Gene Description	collagen, type IV, alpha 3 (Goodpasture antigen) binding protein
------------------	------------------------------------------------------------------

Omim ID	604677
---------	------------------------

Gene Ontology	Hyperlink
---------------	---------------------------

Gene Summary	This gene encodes a kinase that specifically phosphorylates the N-terminal region of the non-collagenous domain of the alpha 3 chain of type IV collagen, known as the Goodpasture antigen. Good pasture disease is the result of an autoimmune response directed at this antigen. One isoform of this protein is also involved in ceramide intracellular transport. Three transcript variants encoding different isoforms have been found for this gene. [provided by RefSeq]
--------------	--------------------------------------------------------------------------------------------------------------------------------------------------------------------------------------------------------------------------------------------------------------------------------------------------------------------------------------------------------------------------------------------------------------------------------------------------------------------------------

Other Designations	Goodpasture antigen-binding protein OTTHUMP00000128248 OTTHUMP00000128249 START domain containing 11 StAR-related lipid transfer (START) domain containing 11 alpha 3 type IV collagen binding protein ceramide transporter lipid-transfer protein CERTL
--------------------	----------------------------------------------------------------------------------------------------------------------------------------------------------------------------------------------------------------------------------------------------------