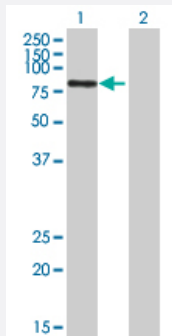


ABCF2 293T Cell Transient Overexpression Lysate(Denatured)

Catalog # H00010061-T01

Size 100 uL

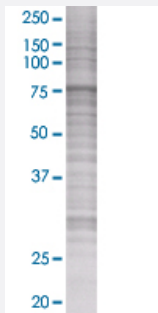
Applications



Western Blot

Lane 1: ABCF2 transfected lysate (71.3 KDa)

Lane 2: Non-transfected lysate.



SDS-PAGE Gel

ABCF2 transfected lysate.

Specification

Transfected Cell Line 293T

Plasmid pCMV-ABCF2 full-length

Host Human

Theoretical MW (kDa) 68.64

Quality Control Testing Transient overexpression cell lysate was tested with Anti-ABCF2 antibody ([H00010061-B01](#)) by Western Blots.
Western Blot
Lane 1: ABCF2 transfected lysate (71.3 KDa)
Lane 2: Non-transfected lysate.
SDS-PAGE Gel
ABCF2 transfected lysate.

Storage Buffer

1X Sample Buffer (50 mM Tris-HCl, 2% SDS, 10% glycerol, 300 mM 2-mercaptoethanol, 0.01% Bromophenol blue)

Storage Instruction

Store at -80°C. Aliquot to avoid repeated freezing and thawing.

Applications

- Western Blot

Gene Info — ABCF2

Entrez GeneID[10061](#)**GeneBank Accession#**[NM_007189](#)**Protein Accession#**[NP_009120](#)**Gene Name**

ABCF2

Gene Alias

ABC28, DKFZp586K1823, EST133090, HUSSY-18, HUSSY18, M-ABC1

Gene Description

ATP-binding cassette, sub-family F (GCN20), member 2

Gene Ontology[Hyperlink](#)**Gene Summary**

The protein encoded by this gene is a member of the superfamily of ATP-binding cassette (ABC) transporters. ABC proteins transport various molecules across extra- and intracellular membranes. ABC genes are divided into seven distinct subfamilies (ABC1, MDR/TAP, MRP, ALD, OABP, GCN20, and White). This protein is a member of the GCN20 subfamily. Alternative splicing of this gene results in multiple transcript variants. [provided by RefSeq]

Other Designations

ABC-type transport protein|ATP-binding cassette, sub-family F, member 2|Iron inhibited ABC transporter 2