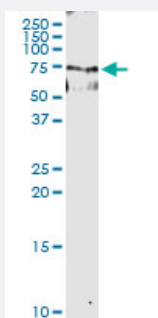


ABCF2 (Human) IP-WB Antibody Pair

Catalog # H00010061-PW1

Size 1 Set

Applications



Immunoprecipitation of ABCF2 transfected lysate using rabbit polyclonal anti-ABCF2 and Protein A Magnetic Bead ([U0007](#)), and immunoblotted with mouse polyclonal anti-ABCF2.

Specification

Product Description	This IP-WB antibody pair set comes with one antibody for immunoprecipitation and another to detect the precipitated protein in western blot.
Reactivity	Human
Quality Control Testing	Immunoprecipitation-Western Blot (IP-WB) Immunoprecipitation of ABCF2 transfected lysate using rabbit polyclonal anti-ABCF2 and Protein A Magnetic Bead (U0007), and immunoblotted with mouse polyclonal anti-ABCF2.
Supplied Product	Antibody pair set content: 1. Antibody pair for IP: rabbit polyclonal anti-ABCF2 (300 ul) 2. Antibody pair for WB: mouse polyclonal anti-ABCF2 (50 ul)
Storage Instruction	Store reagents of the antibody pair set at -20°C or lower. Please aliquot to avoid repeated freeze thaw cycle. Reagents should be returned to -20°C storage immediately after use.

Applications

- Immunoprecipitation-Western Blot

[Protocol Download](#)

Gene Info — ABCF2

Entrez GeneID	10061
Gene Name	ABCF2
Gene Alias	ABC28, DKFZp586K1823, EST133090, HUSSY-18, HUSSY18, M-ABC1
Gene Description	ATP-binding cassette, sub-family F (GCN20), member 2
Gene Ontology	Hyperlink
Gene Summary	<p>The protein encoded by this gene is a member of the superfamily of ATP-binding cassette (ABC) transporters. ABC proteins transport various molecules across extra- and intracellular membranes. ABC genes are divided into seven distinct subfamilies (ABC1, MDR/TAP, MRP, ALD, OABP, GCN20, and White). This protein is a member of the GCN20 subfamily. Alternative splicing of this gene results in multiple transcript variants. [provided by RefSeq]</p>
Other Designations	ABC-type transport protein ATP-binding cassette, sub-family F, member 2 Iron inhibited ABC transporter 2