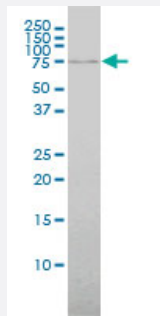


# ABCF2 monoclonal antibody (M01), clone 1D11

Catalog # H00010061-M01

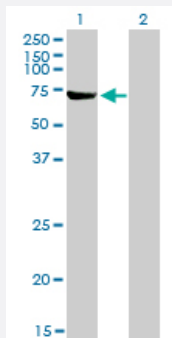
Size 100 ug

## Applications



### Western Blot (Cell lysate)

ABCF2 monoclonal antibody (M01), clone 1D11 Western Blot analysis of ABCF2 expression in Hela ( Cat # L013V1 ).

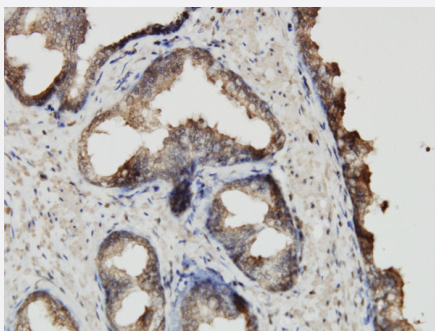


### Western Blot (Transfected lysate)

Western Blot analysis of ABCF2 expression in transfected 293T cell line by ABCF2 monoclonal antibody (M01), clone 1D11.

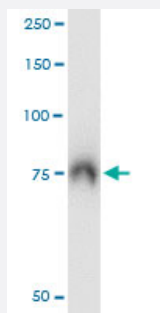
Lane 1: ABCF2 transfected lysate(68.53 KDa).

Lane 2: Non-transfected lysate.



### Immunohistochemistry (Formalin/PFA-fixed paraffin-embedded sections)

Immunoperoxidase of monoclonal antibody to ABCF2 on formalin-fixed paraffin-embedded human prostate. [antibody concentration 3 ug/ml]

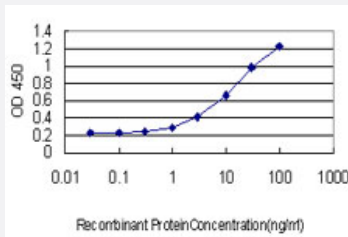


### Immunoprecipitation

Immunoprecipitation of ABCF2 transfected lysate using anti-ABCF2 monoclonal antibody and Protein A Magnetic Bead, and immunoblotted with ABCF2 monoclonal antibody.

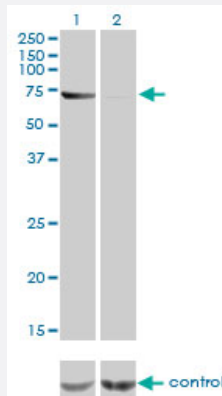
## Sandwich ELISA (Recombinant protein)

Detection limit for recombinant GST tagged ABCF2 is approximately 0.3ng/ml as a capture antibody.

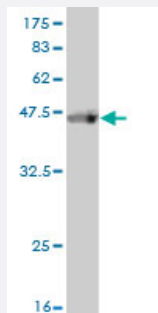


## RNAi Knockdown (Antibody validated)

Western blot analysis of ABCF2 over-expressed 293 cell line, cotransfected with ABCF2 Validated Chimera RNAi ( Cat # H00010061-R01V ) (Lane 2) or non-transfected control (Lane 1). Blot probed with ABCF2 monoclonal antibody (M01), clone 1D11 (Cat # H00010061-M01 ). GAPDH ( 36.1 kDa ) used as specificity and loading control.



Western Blot detection against Immunogen (37.73 KDa) .



## Specification

Product Description	Mouse monoclonal antibody raised against a partial recombinant ABCF2.
Immunogen	ACBF2 (AAH01661, 1 a.a. ~ 110 a.a) partial recombinant protein with GST tag. MW of the GST tag alone is 26 KDa.
Sequence	MPSDLAKKKAAKKKEAAKARQRPRKGHEENGDVVTEPQVAEKNEANGRETTEVDLLTKELEDF EMKKAAARAVTGV LASHPNSTDVHIINLSLTFH GQELLSDTKLELNS
Host	Mouse
Reactivity	Human
Isotype	IgG2a Kappa

**Quality Control Testing**

Antibody Reactive Against Recombinant Protein.  
Western Blot detection against Immunogen (37.73 KDa) .

**Storage Buffer**

In 1x PBS, pH 7.4

**Storage Instruction**

Store at -20°C or lower. Aliquot to avoid repeated freezing and thawing.

## Applications

- Western Blot (Cell lysate)

ABCF2 monoclonal antibody (M01), clone 1D11 Western Blot analysis of ABCF2 expression in Hela ( Cat # L013V1 ).

[Protocol Download](#)

- Western Blot (Transfected lysate)

Western Blot analysis of ABCF2 expression in transfected 293T cell line by ABCF2 monoclonal antibody (M01), clone 1D11.

Lane 1: ABCF2 transfected lysate(68.53 KDa).

Lane 2: Non-transfected lysate.

[Protocol Download](#)

- Western Blot (Recombinant protein)

[Protocol Download](#)

- Immunohistochemistry (Formalin/PFA-fixed paraffin-embedded sections)

Immunoperoxidase of monoclonal antibody to ABCF2 on formalin-fixed paraffin-embedded human prostate. [antibody concentration 3 ug/ml]

[Protocol Download](#)

- Immunoprecipitation

Immunoprecipitation of ABCF2 transfected lysate using anti-ABCF2 monoclonal antibody and Protein A Magnetic Bead, and immunoblotted with ABCF2 monoclonal antibody.

[Protocol Download](#)

- Sandwich ELISA (Recombinant protein)

Detection limit for recombinant GST tagged ABCF2 is approximately 0.3ng/ml as a capture antibody.

[Protocol Download](#)

- ELISA

- RNAi Knockdown (Antibody validated)

Western blot analysis of ABCF2 over-expressed 293 cell line, cotransfected with ABCF2 Validated Chimera RNAi ( Cat # H00010061-R01V ) (Lane 2) or non-transfected control (Lane 1). Blot probed with ABCF2 monoclonal antibody (M01), clone 1D11 (Cat # H00010061-M01 ). GAPDH ( 36.1 kDa ) used as specificity and loading control.

[Protocol Download](#)

## Gene Info — ABCF2

**Entrez GeneID** [10061](#)

**GeneBank Accession#** [BC001661](#)

**Protein Accession#** [AAH01661](#)

**Gene Name** ABCF2

**Gene Alias** ABC28, DKFZp586K1823, EST133090, HUSSY-18, HUSSY18, M-ABC1

**Gene Description** ATP-binding cassette, sub-family F (GCN20), member 2

**Gene Ontology** [Hyperlink](#)

**Gene Summary** The protein encoded by this gene is a member of the superfamily of ATP-binding cassette (ABC) transporters. ABC proteins transport various molecules across extra- and intracellular membrane s. ABC genes are divided into seven distinct subfamilies (ABC1, MDR/TAP, MRP, ALD, OABP, GCN20, and White). This protein is a member of the GCN20 subfamily. Alternative splicing of this gene results in multiple transcript variants. [provided by RefSeq]

**Other Designations** ABC-type transport protein|ATP-binding cassette, sub-family F, member 2|Iron inhibited ABC transporter 2